

TE-5iK-MD

Magnetically Driven

Single-stage Centrifugal

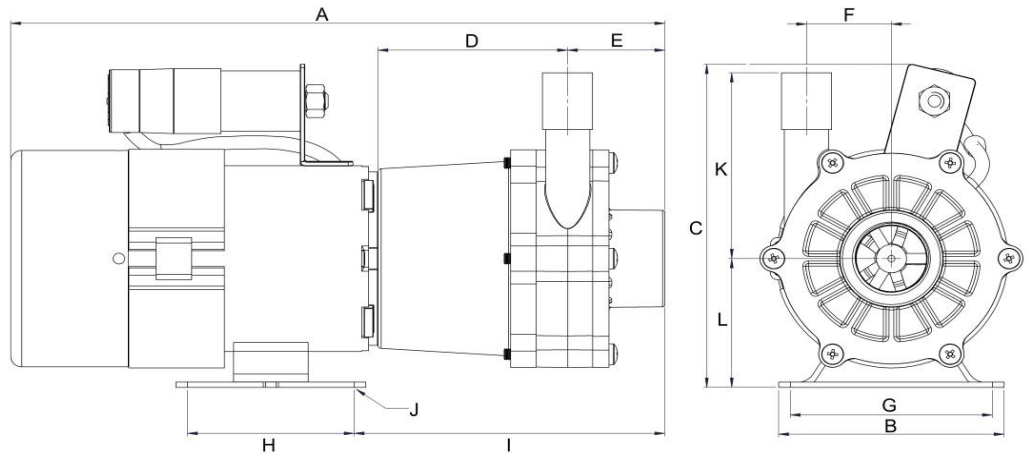
* Not to scale.
Specifications are subject to change.
Dimensions may change depending on motor specified

Wetted materials

Pump housing	PVDF
Impeller	PVDF
Spindle	Ceramic
Thrust Washer	Ceramic
O Ring	Viton

Limitations

Max. temp	93 °C
Max. pressure	5 bar



Dimensions

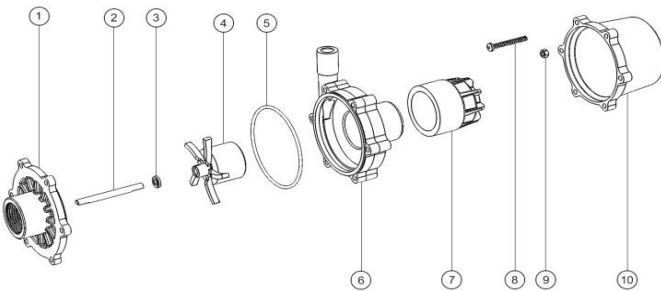
all dimensions in mm

	A	B	C	D	E	F	G	H	I	J	K	L	Inlet	Outlet
230V	285.00	118.00	144.00	74.00	38.00	32.00	98.00	72.00	148.00	7 x10	86.00	56.00	1" BSP.F	1/2" BSP.M
415V	308.00	118.00	170.00	74.00	38.00	32.00	98.00	80.00	151.00	7 x10	86.00	56.00	1" BSP.F	1/2" BSP.M
110V	284.00	118.00	152.00	74.00	38.00	32.00	98.00	80.00	151.00	7 x10	86.00	56.00	1" BSP.F	1/2" BSP.M

Motor Data

	Code	Frame	Mounting	IP	Phase	rpm	50 Hz Kw	50 Hz Amps	60 Hz rpm	60 Hz Kw	60 Hz Amps	Approvals	Total kg
Gibb. 230V 50Hz	MY562-2 IP55	56	B34	55	1	2900	0.12	0.9	-	-	-	CE	3.7
Microclutch 110V	110DA63636	56	B35	55	1	2900	0.12	2.6	-	-	-	CE	3.7
TEC 400V 50/60Hz		56	B34	56	3	2900	0.12	0.47	3400	0.14	0.47	CE	3.9

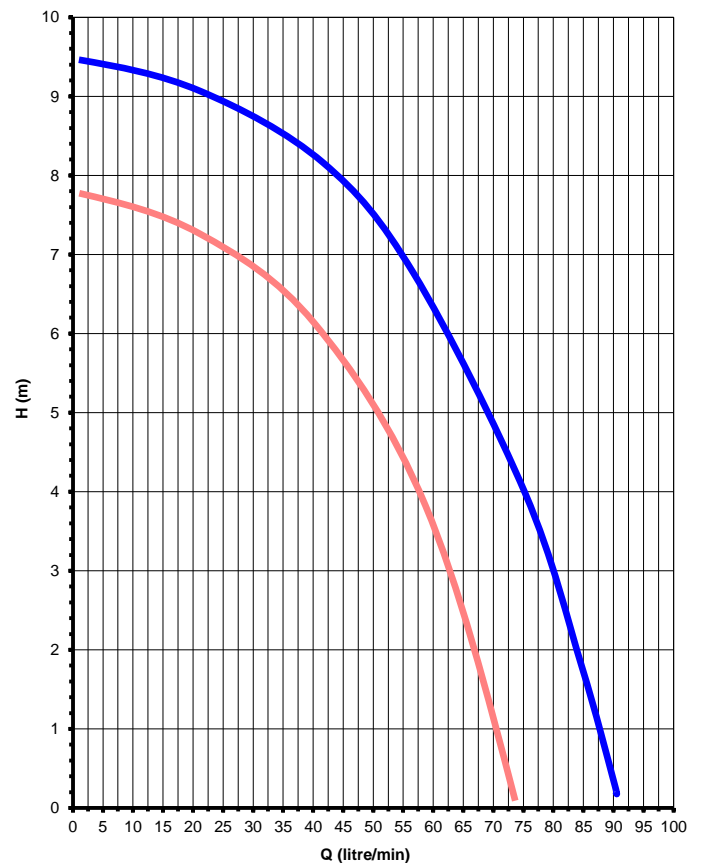
Parts List



Item	Description	Qty	Code
1	FRONT COVER KYNAR	1	0150-124-10
2	CERAMIC SPINDLE	1	0130-024-UK
3	CERAMIC THRUST WASHER	1	0130-028-UK
4	IMPELLER ASSY (ENCAP) KYNAR	1	0150-130-02
5	VITON 'O' RING	1	0135-023-UK
6	PUMP HOUSING KYNAR	1	0150-123-01
7	DRIVE MAGNET ASSY (9 mm bore) HT	1	0150-178-01
8	HOUSING SCREW ST/STEEL	6	0150-100-UK
9	HOUSING WASHER ST/STEEL	6	0150-200-UK
10	MOTOR BRACKET	1	0001-050-UK

Performance

Tests obtained with water 1.0 SG



50 Hz 2900 rpm 60 Hz 3400 rpm



March May Ltd, Howard Road, Eaton Socon, St Neots, PE19 8NZ, UK

Tel: +44 (0) 1480 214444 Fax: +44 (0) 1480 405336 E-Mail: sales@marchmay.co.uk Website: www.marchmay.co.uk