

SS-4R-MD

Magnetically Driven

Single-stage Centrifugal

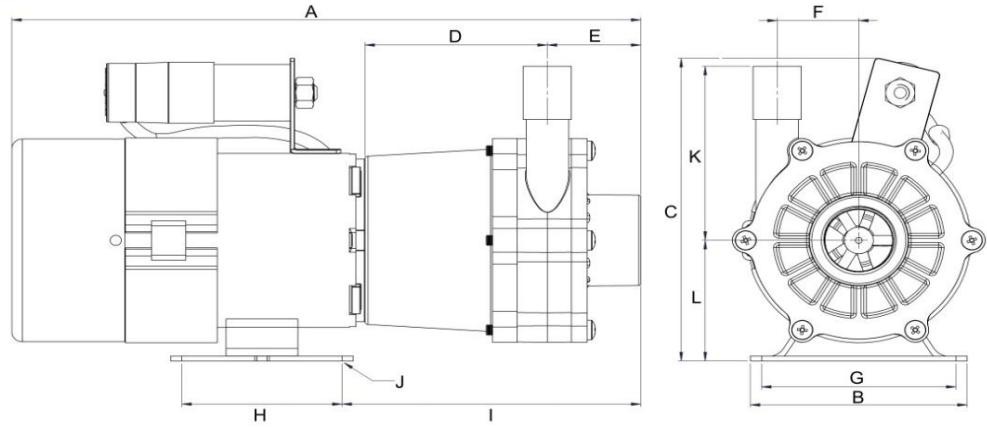
* Not to scale.
Specifications are subject to change.
Dimensions may change depending on motor specified

Wetted materials

| | |
|---------------|-----------------|
| Pump housing | Ryton |
| Impeller | Ryton |
| Spindle | Stainless Steel |
| Thrust Washer | Ceramic |
| O Ring | Nitrile |

Limitations

| | |
|---------------|-------|
| Max. temp | 93°C |
| Max. pressure | 6 bar |



Dimensions

all dimensions in mm

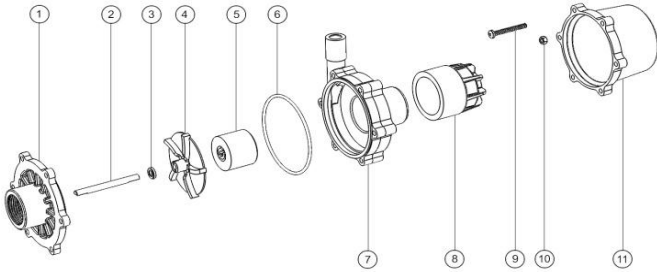
| | A | B | C | D | E | F | G | H | I | J | K | L | Inlet | Outlet |
|---------------|--------|-------|--------|-------|-------|-------|-------|-------|--------|--------|-------|-------|----------|--------|
| 50 Hz 230V | 248.00 | 89.00 | 126.00 | 83.00 | 37.00 | 40.30 | 67.50 | 60.20 | 109.00 | 12 x 8 | 85.00 | 56.00 | 1" BSP F | * |
| 50/60 Hz 230V | 259.00 | 89.00 | 126.00 | 83.00 | 37.00 | 40.30 | 67.50 | 60.20 | 109.00 | 12 x 8 | 85.00 | 56.00 | 1" BSP F | * |

* Outlet can be either 1/2" BSP Male or 21mm barbed male.

Motor Data

| | Code | Frame | Mounting | IP | Phase | rpm | 50 Hz Kw | 50 Hz Amps | 60 Hz rpm | 60 Hz Kw | 60 Hz Amps | Approvals | Total kg |
|---------------|----------|-------|----------|----|-------|------|----------|------------|-----------|----------|------------|------------|----------|
| 50 Hz 230V | AF1D6288 | 56 | B34 | 44 | 1 | 2900 | 0.03 | 0.7 | - | - | - | CE | 2.9 |
| 50/60 Hz 230V | AF1D6289 | 56 | B34 | 44 | 1 | 2900 | 0.07 | 0.7 | 3400 | 0.07 | 0.7 | CE UL CSA* | 2.9 |

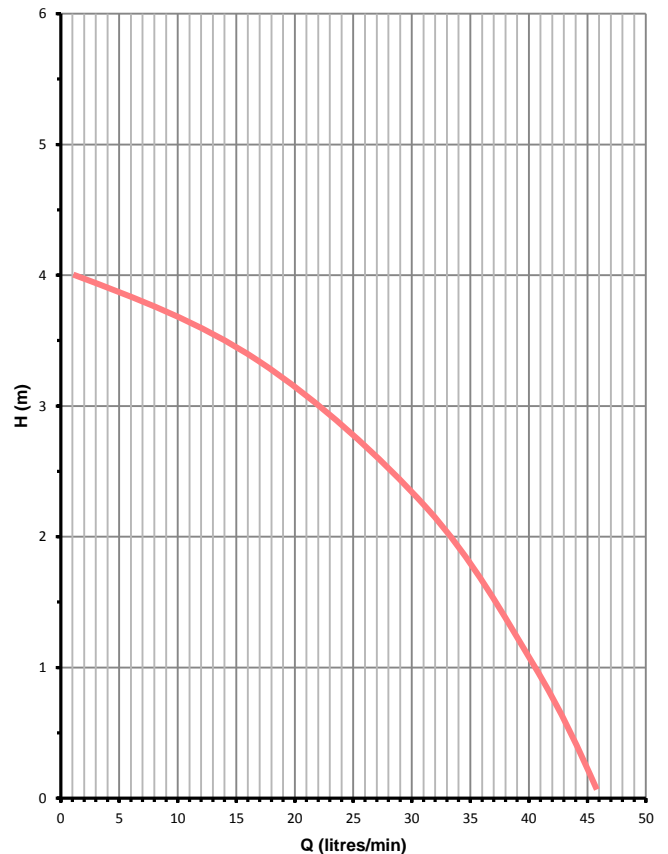
Parts List



| Item | Description | Qty | Code |
|------|------------------------------|-----|-------------|
| 1 | Front Cover PPS BSP | 1 | 5028-110-09 |
| 2 | Stainless Steel Spindle 72mm | 1 | 5028-231-51 |
| 3 | Ceramic Thrust Washer | 1 | 0130-028-UK |
| 4 | Impeller PPS | 1 | 5028-130-09 |
| 5 | Impeller Magnet | 1 | 5021-191-08 |
| 6 | Nitrile O Ring | 1 | 5020-122-30 |
| 7 | Pump Housing PPS | 1 | 5028-141-09 |
| 8 | Drive Magnet Moulded | 1 | 5021-202-60 |
| 9 | Screw M5x40 Pozi Pan | 6 | 5090-545-50 |
| 10 | Nut Full M5 | 6 | 5021-180-50 |
| 11 | Motor Bracket PP | 1 | 5020-170-01 |

Performance

Tests obtained with water 1.0 SG



50 Hz 2900 rpm



March May Ltd, Howard Road, Eaton Socon, St Neots, PE19 8NZ, UK

Tel: +44 (0) 1480 214444 Fax: +44 (0) 1480 405336 E-Mail: sales@marchmay.co.uk Website: www.marchmay.co.uk