

# SS-4P-MD

Magnetically Driven

Single-stage Centrifugal

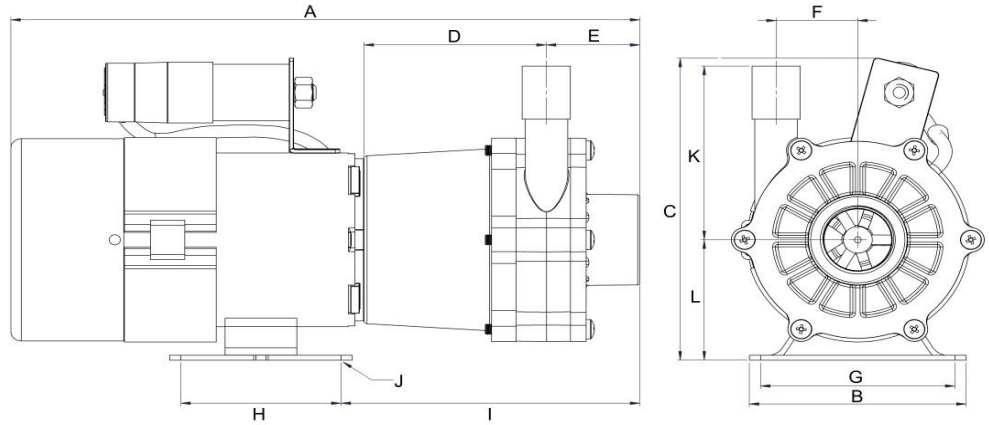
\* Not to scale.  
Specifications are subject to change.  
Dimensions may change depending on motor specified

### Wetted materials

|               |                 |
|---------------|-----------------|
| Pump housing  | Polypropylene   |
| Impeller      | Polypropylene   |
| Spindle       | Stainless Steel |
| Thrust Washer | Ceramic         |
| O Ring        | Nitrile         |

### Limitations

|               |       |
|---------------|-------|
| Max. temp     | 88 °C |
| Max. pressure | 3 bar |



### Dimensions

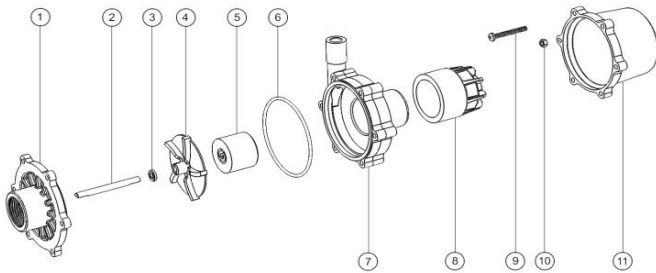
| all dimensions in mm | A      | B     | C      | D     | E     | F     | G     | H     | I      | J      | K     | L     | Inlet    | Outlet |
|----------------------|--------|-------|--------|-------|-------|-------|-------|-------|--------|--------|-------|-------|----------|--------|
| 50 Hz 230V           | 221.70 | 89.00 | 140.00 | 81.40 | 41.80 | 40.30 | 67.50 | 60.20 | 109.00 | 12 x 8 | 85.00 | 56.00 | 1" BSP F | *      |
| 50/60 Hz 230V        | 232.70 | 89.00 | 140.00 | 81.40 | 41.80 | 40.30 | 67.50 | 60.20 | 109.00 | 12 x 8 | 85.00 | 56.00 | 1" BSP F | *      |

\* Outlet can be either 1/2" BSP Male or 21mm barbed male.

### Motor Data

|               | Code     | Frame | Mounting | IP | Phase | rpm  | 50 Hz Kw | 50 Hz Amps | 60 Hz rpm | 60 Hz Kw | 60 Hz Amps | Approvals  | Total kg |
|---------------|----------|-------|----------|----|-------|------|----------|------------|-----------|----------|------------|------------|----------|
| 50 Hz 230V    | AF1D6288 | 56    | B34      | 44 | 1     | 2900 | 0.03     | 0.7        | -         | -        | -          | CE         | 2.9      |
| 50/60 Hz 230V | AF1D6289 | 56    | B34      | 44 | 1     | 2900 | 0.07     | 0.7        | 3400      | 0.07     | 0.7        | CE UL CSA* | 2.9      |

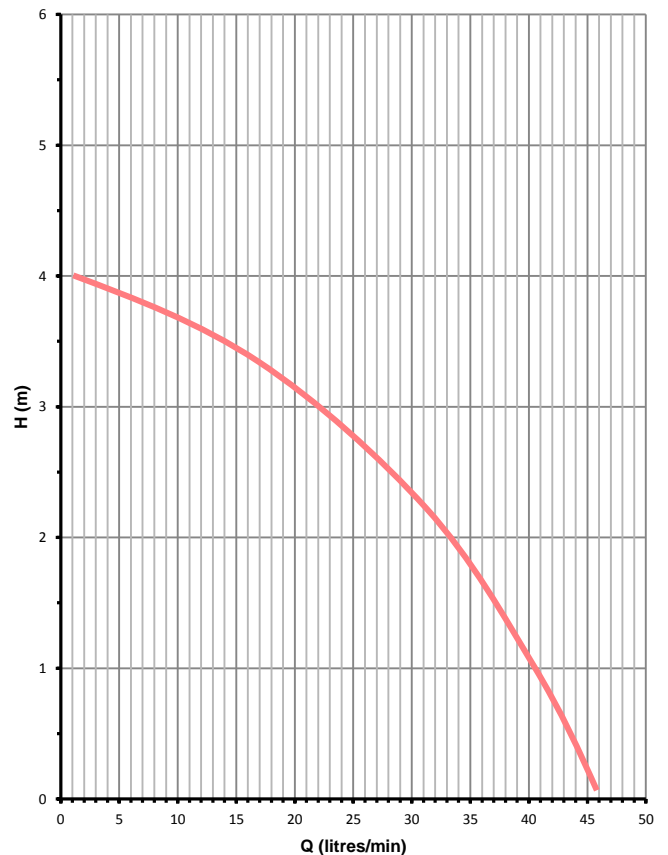
### Parts List



| Item | Description                  | Qty | Code        |
|------|------------------------------|-----|-------------|
| 1    | Front Cover PP BSP           | 1   | 5028-110-01 |
| 2    | Stainless Steel Spindle 72mm | 1   | 5028-231-51 |
| 3    | Ceramic Thrust Washer        | 1   | 0130-028-UK |
| 4    | Impeller PP (no.4 size 58mm) | 1   | 5028-131-01 |
| 5    | Impeller Magnet PPS          | 1   | 5021-191-08 |
| 6    | Nitrile O Ring               | 1   | 5020-122-30 |
| 7    | Pump Housing PP              | 1   | 5028-141-01 |
| 8    | Drive Magnet Moulded         | 1   | 5021-202-60 |
| 9    | Screw M5x40 Pozi Pan         | 6   | 5090-545-50 |
| 10   | Nut Full M5                  | 6   | 5021-180-50 |
| 11   | Motor Bracket PP             | 1   | 5020-170-01 |

### Performance

Tests obtained with water 1.0 SG



50 Hz 2900 rpm

