

SS-7R-MD

Magnetically Driven

Single-stage Centrifugal

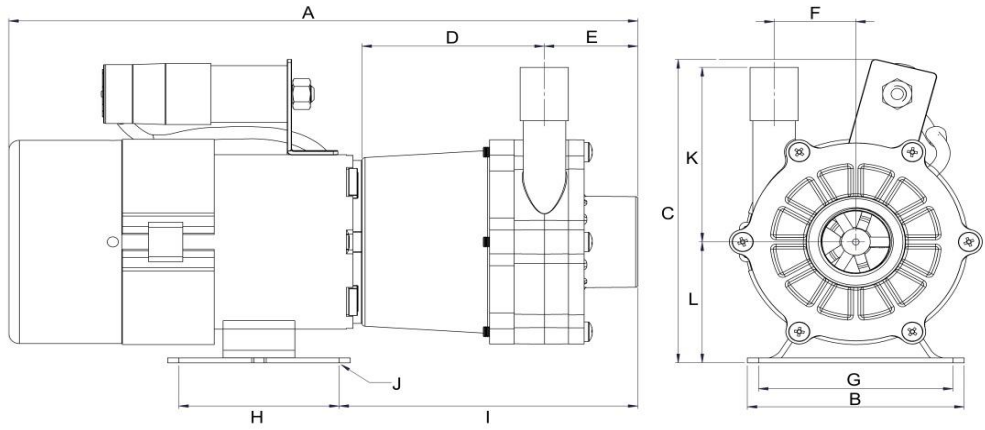
* Not to scale.
Specifications are subject to change.
Dimensions may change depending on motor specified

Wetted materials

Pump housing	Ryton
Impeller	Ryton
Spindle	Stainless Steel
Thrust Washer	Ceramic
O Ring	Nitrile

Limitations

Max. temp	93 °C
Max. pressure	6 bar



Dimensions

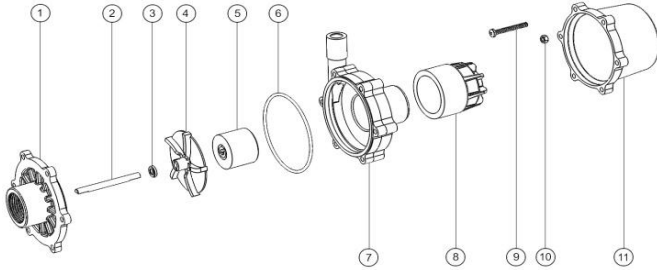
all dimensions in mm	A	B	C	D	E	F	G	H	I	J	K	L	Inlet	Outlet
50/60 Hz 230V	263.70	89.00	148.00	81.40	41.80	40.30	67.50	60.20	109.00	12 x 8	85.00	56.00	1" BSP F	*
50/60 Hz 230V	256.20	89.00	148.00	81.40	41.80	40.30	67.50	60.20	109.00	12 x 8	85.00	56.00	1" BSP F	*

* There are 2 options for the outlet port: 1/2" BSP or 21mm Hose tail.

Motor Data

	Code	Frame	Mounting	IP	Phase	rpm	50 Hz Kw	50 Hz Amps	60 Hz rpm	60 Hz Kw	60 Hz Amps	Approvals	Total kg
50/60 Hz 230V	AF1J6215	56	B34	44	1	2900	0.07	0.7	3400	0.09	0.7	CE	3.25
50/60 Hz 230V	AFIH6457	56	B34	44	1	2900	0.07	0.75	3400	0.09	0.75	CE UL CSA*	3.25

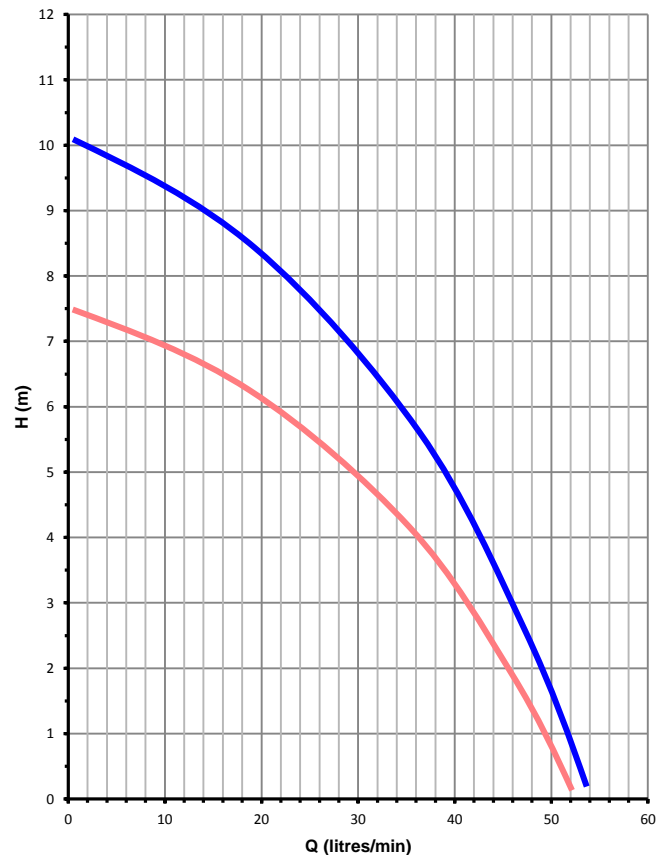
Parts List



Item	Description	Qty	Code
1	Front Cover PPS BSP	1	5028-110-09
2	Stainless Steel Spindle 72mm	1	5028-231-51
3	Ceramic Thrust Washer	1	0130-028-UK
4	Impeller	1	5028-132-09
5	Impeller Magnet	1	5021-191-08
6	Nitrile O Ring	1	5020-122-30
7	Pump Housing PPS	1	5028-141-09
8	Drive Magnet Moulded	1	5021-202-60
9	Screw M5x40 Pozi Pan	6	5090-545-50
10	Nut Full M5	6	5021-180-50
11	Motor Bracket PP	1	5020-170-01

Performance

Tests obtained with water 1.0 SG



50 Hz 2900 rpm

60 Hz 3400 rpm



March May Ltd, Howard Road, Eaton Socon, St Neots, PE19 8NZ, UK

Tel: +44 (0) 1480 214444 Fax: +44 (0) 1480 405336 E-Mail: sales@marchmay.co.uk Website: www.marchmay.co.uk