

SS-9P-MD

Magnetically Driven

Single-stage Centrifugal

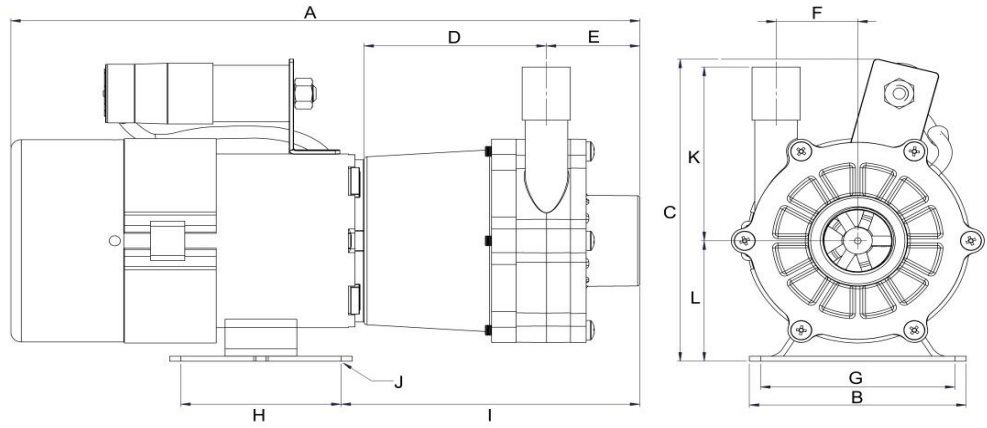
* Not to scale.
Specifications are subject to change.
Dimensions may change depending on motor specified

Wetted materials

Pump housing	Polypropylene
Impeller	Polypropylene
Spindle	Stainless Steel
Thrust Washer	Ceramic
O Ring	Nitrile

Limitations

Max. temp	88 °C
Max. pressure	3 bar



Dimensions

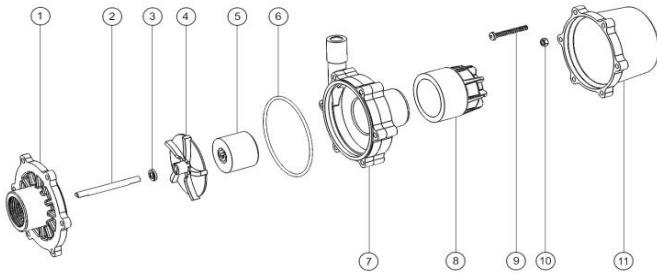
all dimensions in mm	A	B	C	D	E	F	G	H	I	J	K	L	Inlet	Outlet
50/60 Hz 230V	261.20	89.00	148.00	81.40	41.80	40.30	67.50	60.20	109.00	12 x 8	85.00	56.00	1" BSP F	*
50/60 Hz 230V	286.20	89.00	148.00	81.40	41.80	40.30	67.50	60.20	109.00	12 x 8	85.00	56.00	1" BSP F	*

* There are 2 options for the outlet port: 1/2" BSP or 21mm Hose tail.

Motor Data

	Code	Frame	Mounting	IP	Phase	rpm	50 Hz			60 Hz			Approvals	Total kg
							Kw	Amps	rpm	Kw	Amps	rpm		
50 Hz 230V	AFIJ6215	56	B34	44	1	2900	0.09	0.7	-	-	-	-	CE	3.60
50/60 Hz 230V	JFIL6536	56	B34	44	1	2900	0.09	0.9	3400	0.12	0.9	-	CE	3.60

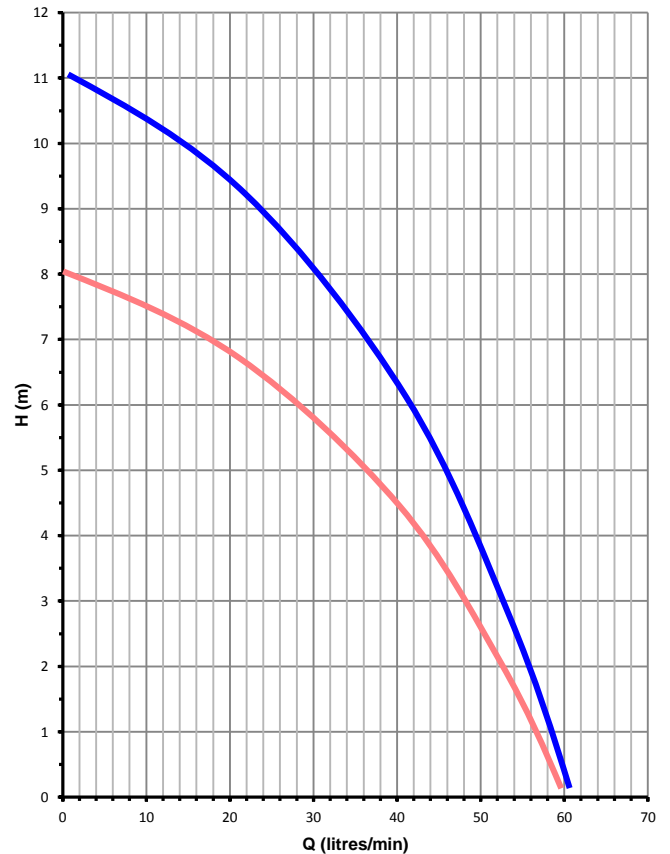
Parts List



Item	Description	Qty	Code
1	Front Cover PP BSP	1	5028-110-01
2	Stainless Steel Spindle 72mm	1	5028-231-51
3	Ceramic Thrust Washer	1	0130-028-UK
4	Impeller PP	1	5058-130-01
5	Impeller Magnet PPS	1	5021-191-08
6	Nitrile O Ring	1	5020-122-30
7	Pump Housing PP	1	5028-141-01
8	Drive Magnet Moulded (for 50 Hz)	1	5021-202-60
	Drive Magnet High Torque Fe (for 60 Hz)	1	5021-204-56/9
9	Screw M5x40 Pozi Pan	6	5090-545-50
10	Nut Full M5	6	5021-180-50
11	Motor Bracket PP	1	5020-170-01

Performance

Tests obtained with water 1.0 SG



50 Hz 2900 rpm

60 Hz 3400 rpm



March May Ltd, Howard Road, Eaton Socon, St Neots, PE19 8NZ, UK

Tel: +44 (0) 1480 214444 Fax: +44 (0) 1480 405336 E-Mail: sales@marchmay.co.uk Website: www.marchmay.co.uk