

MSP-4-HP

Magnetically Driven

Multi-stage Centrifugal

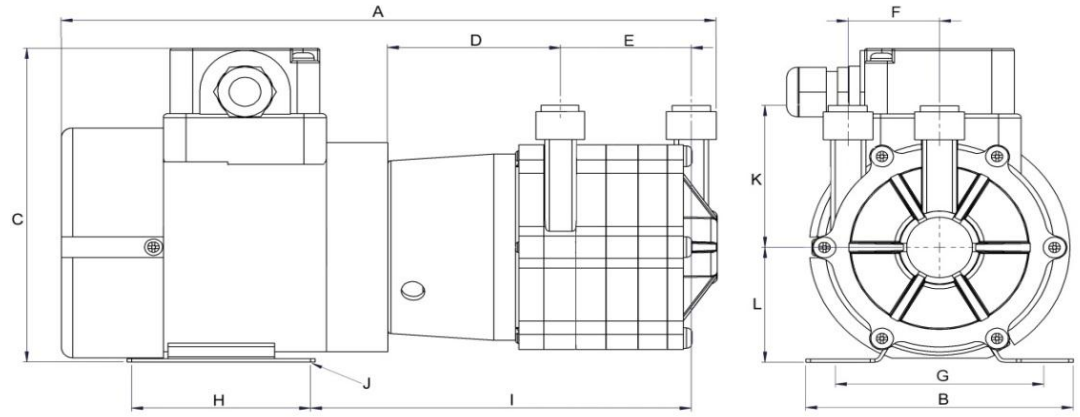
* Not to scale.
Specifications are subject to change.
Dimensions may change depending on motor specified

Wetted materials

Pump housing	Polypropylene
Impeller	Ryton
Spindle	Stainless Steel
Thrust Washer	Ceramic
O Ring	Nitrile

Limitations

Max. temp	88 °C
Max. pressure	3.5 bar



Dimensions

all dimensions in mm	A	B	C	D	E	F	G	H	I	J	K	L	Inlet	Outlet
CIMA 180	331.50	105.00	145.00	76.50	70.50	40.50	90.00	147.00	72.00	12 x 8	78.00	56.00	*	*
CIMA 250	331.50	101.00	160.00	76.50	70.50	40.50	90.00	147.00	72.00	12 x 8	78.00	56.00		

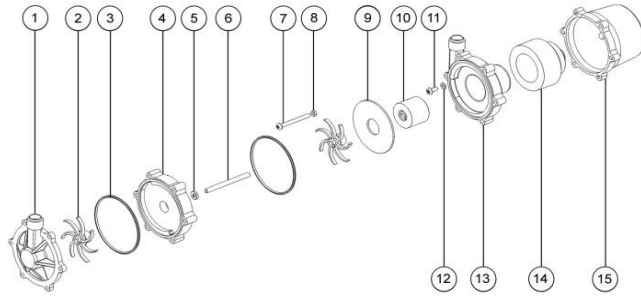
* There are 3 options for the Inlet and Outlet on this pump: 15mm push fit, 3/4" BSPM, 1/2" NPTM

Motor Data

Code	Frame	Mounting	IP	Phase	rpm	50 Hz Kw	50 Hz Amps	60 Hz rpm	60 Hz Kw	60 Hz Amps	Approvals	Total kg
CIMA 180	56	B3/B14	55	1	2900	0.18	1.6	3400	0.25	1.6	CE*	4.6
CIMA 250	56	B3/B14	55	1	2900	0.18	2.1	3400	0.25	2.1	CE*	4.6

* Manufactured from UL listed components

Parts List

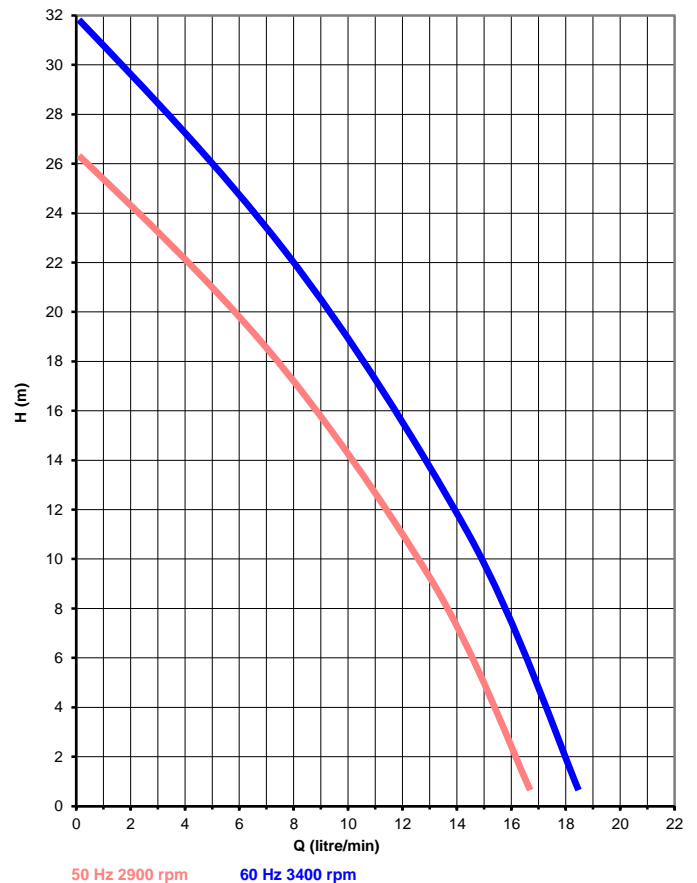


N.B. Parts diagram shows 2 stage pump

Item	Description	Qty	Code
1	MSP FRONT COVER PP JG	1	5020-110-01
	MSP FRONT COVER PP 1/2" NPTM	1	5020-111-01
	MSP FRONT COVER PP 3/4" BSPM	1	5020-112-01
2	IMPELLER PPS	4	5021-130-08N
3	O RING Id 87, 3mm C/SEC NITRILE	4	5020-122-30
4	STAGE HOUSING	3	5020-150-01
5	THRUST WASHER CERAMIC	1	0130-028-UK
6	SPINDLE ST STEEL 114 mm	1	5021-233-51
7	M5 x 70 POZI PAN SCREW ST STEEL	6	5020-212-50
8	FULL NUT M5 ST STEEL	6	5021-180-50
9	BACKING PLATE	3	5020-160-13
10	IMPELLER MAGNET PPS	1	5021-191-08
11	SCREW M5 x 12 POZI PAN ST STEEL	4	5021-2212-50
12	WASHER M5 SHAKEPROOF ST STEEL	4	0135-200-UK
13	MSP PUMP HOUSING PP JG	1	5020-140-01
	MSP PUMP HOUSING PP 1/2" NPTM	1	5020-141-01
	MSP PUMP HOUSING PP 3/4" BSPM	1	5020-142-01
14	DRIVE MAGNET	1	5021-208-56/9
15	MSP BRACKET PP	1	5020-170-01

Performance

Tests obtained with water 1.0 SG



March May Ltd, Howard Road, Eaton Socon, St Neots, PE19 8NZ, UK

Tel: +44 (0) 1480 214444 Fax: +44 (0) 1480 405336 E-Mail: sales@marchmay.co.uk Website: www.marchmay.co.uk