

MSP-5

Magnetically Driven

Multi-stage Centrifugal

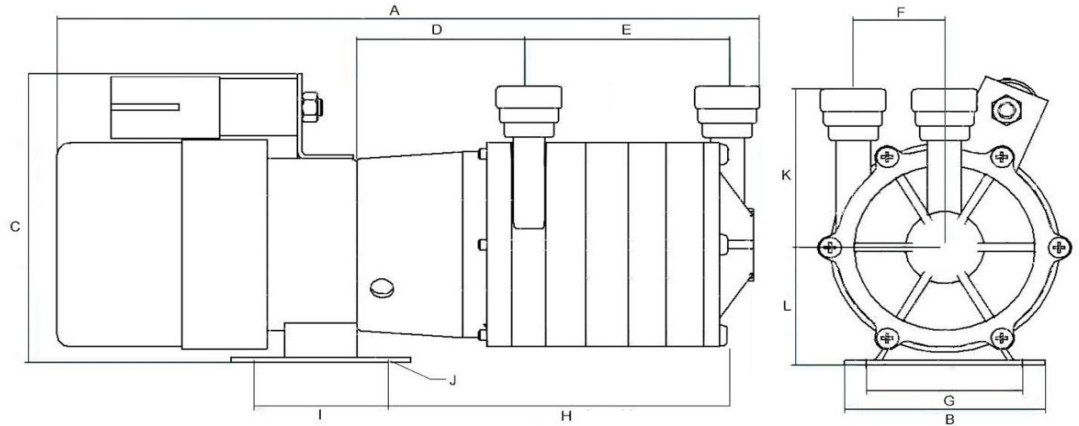
* Not to scale.
Specifications are subject to change.
Dimensions may change depending on motor specified

Wetted materials

Pump housing	Polypropylene
Impeller	Ryton
Spindle	Stainless Steel
Thrust Washer	Ceramic
O Ring	Nitrile

Limitations

Max. temp	88 °C
Max. pressure	3.5 bar



Dimensions

all dimensions in mm	A	B	C	D	E	F	G	H	I	J	K	L	Inlet	Outlet
230V 50 Hz	333.50	88.90	140.00	76.50	94.00	40.50	67.50	164.50	60.20	12 x 8	78.00	56.00	*	*
CIMA 250	349.00	101.00	160.00	76.50	94.00	40.50	90.00	164.50	72.00	12 x 8	78.00	56.00		
Cantoni 230V	359.00	110.00	155.00	76.50	94.00	40.50	90.00	164.50	60.20	12 x 8	78.00	56.00		
TEC 230V 50/60Hz	377.50	118.00	173.00	76.50	94.00	40.50	100.00	164.50	80.00	12 x 8	78.00	63.00		

* There are 3 options for the Inlet and Outlet on this pump: 15mm push fit, 3/4" BSPM, 1/2" NPTM

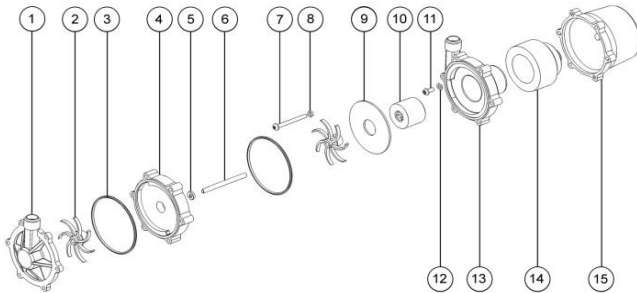
Motor Data

	Code	Frame	Mounting	IP	Phase	rpm	50 Hz			60 Hz			Approvals	Total kg
							Kw	Amps		rpm	Kw	Amps		
230V 50 Hz	JF1L6536	56	B34	44	1	2900	0.12	0.7	-	-	-	CE	4.5	
CIMA 250		56	B3/B14	55	1	2900	0.18	2.1	3400	0.25	2.1	CE*	5.5	
Cantoni 230V	SELh-56-2C2	56	B34/2	55	1	2900	0.18	1.5	3400	0.25	1.8	CE UL CSA**	4.9	
TEC 50/60Hz	MS631-2 0.1823TECAB3	63	B3	55	1	2900	0.18	0.95	3400	0.22	0.95	CE	4.5	

* Manufactured from UL listed components

** Manufacturer's UL Number E233211

Parts List

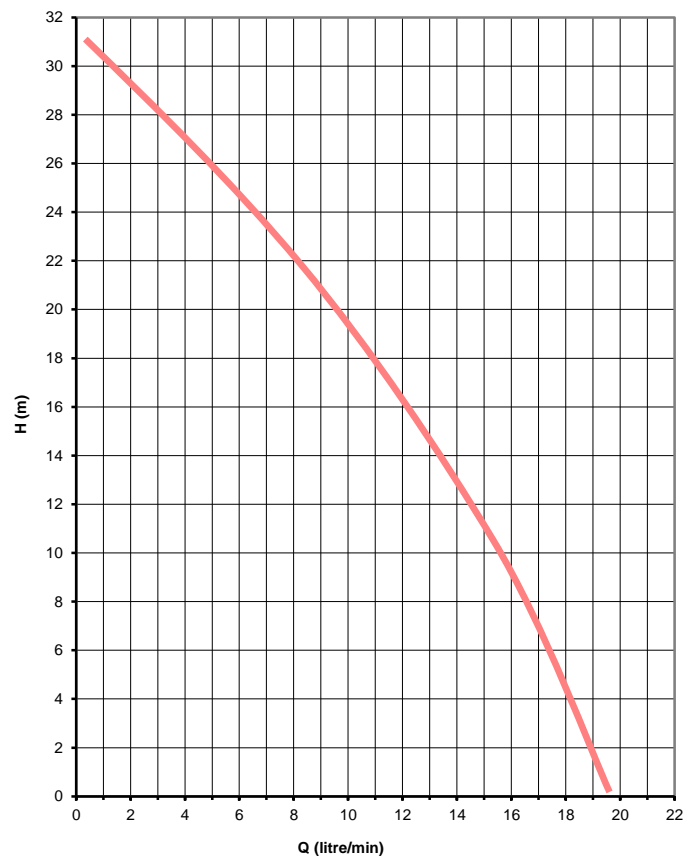


N.B. Parts diagram shows 2 stage pump

Item	Description	Qty	Code
1	MSP FRONT COVER PP JG	1	5020-110-01
	MSP FRONT COVER PP 1/2" NPTM	1	5020-111-01
	MSP FRONT COVER PP 3/4" BSPM	1	5020-112-01
2	IMPELLER PPS	5	5021-130-08N
3	O RING Id 87, 3mm C/SEC NITRILE	5	5020-122-30
4	STAGE HOUSING	4	5020-150-01
5	THRUST WASHER CERAMIC	1	0130-028-UK
6	SPINDLE ST STEEL 132 mm	1	5021-234-51
7	M5 x 90 POZI PAN SCREW ST STEEL	6	5020-213-50
8	FULL NUT M5 ST STEEL	6	5021-180-50
9	BACKING PLATE	4	5020-160-13
10	IMPELLER MAGNET PPS	1	5021-191-08
11	SCREW M5 x 12 POZI PAN ST STEEL	5	5021-2212-50
12	WASHER M5 SHAKEPROOF ST STEEL	5	0135-200-UK
13	MSP PUMP HOUSING PP JG	1	5020-140-01
	MSP PUMP HOUSING PP 1/2" NPTM	1	5020-141-01
	MSP PUMP HOUSING PP 3/4" BSPM	1	5020-142-01
14	DRIVE MAGNET	1	5021-208-56/9
15	MSP BRACKET PP	1	5020-170-01

Performance

Tests obtained with water 1.0 SG



50 Hz 2900 rpm

