

AC-2CP-MD

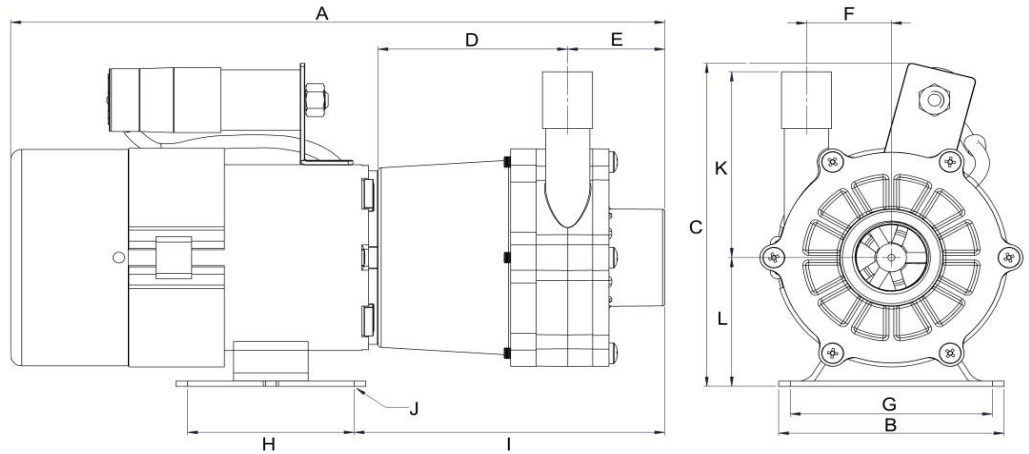
Magnetically Driven

Multi-stage Centrifugal

* Not to scale.
Specifications are subject to change.
Dimensions may change depending on motor specified

Wetted materials	
Pump housing	Polypropylene
Impeller	Polypropylene
Spindle	Ceramic
Thrust Washer	Ceramic
O Ring	Viton
Impeller Mag	Stront Ferrite

Limitations	
Max. temp	88 °C
Max. pressure	3.4 bar



Dimensions

all dimensions in mm	A	B	C	D	E	F	G	H	I	J	K	L	Inlet	Outlet
50/60 Hz 230V	188.00	110.00	140.00	57.00	31.00	21.00	90.00	60.20	74.00	7 x10	59.00	56.00	*	1/4 NPT.M
50/60 Hz 230V	199.00	110.00	140.00	57.00	31.00	21.00	90.00	60.20	74.00	7 x10	59.00	56.00	*	1/4 NPT.M
50/60 Hz 230V	194.00	110.00	140.00	57.00	31.00	21.00	90.00	60.20	74.00	7 x10	59.00	56.00	*	1/4 NPT.M

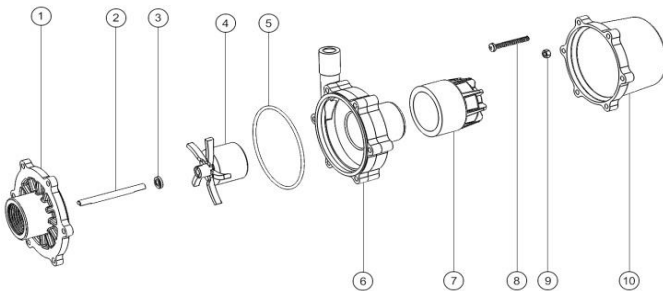
* There are 2 options for the inlet port: 3/8 NPT.F or 3/4 NPT.M

Motor Data

	Code	Frame	Mounting	IP	Phase	rpm	50 Hz		60 Hz		Approvals	Total kg	
							Kw	Amps	Kw	Amps			
50 Hz 230V	AF1D6288	56	B34	44	1	2900	0.03	0.7	-	-	CE	2.9	
50/60 Hz 230V	AF1D6289	56	B34	44	1	2900	0.03	0.7	3400	0.04	0.75	CE UL CSA*	2.9
50/60 Hz 110V	AFD17037	56	B34	44	1	2900	0.03	1.4	3400	0.03	1.5	CE UL CSA*	2.9

* Manufacturer's UL Number - E46412 and CSA Number - CSA154595

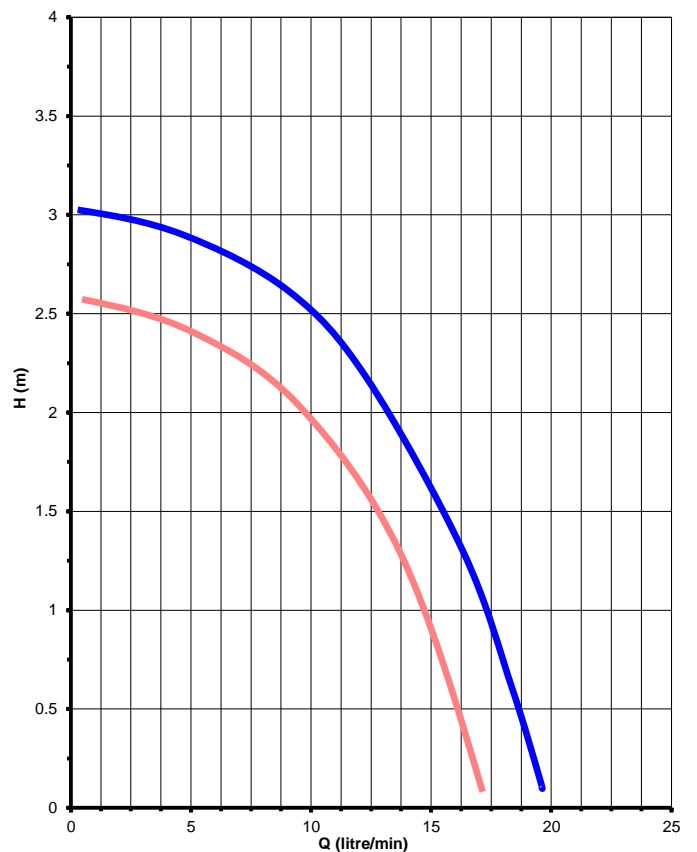
Parts List



Item	Description	Qty	Code
1	FRONT COVER P.P	1	0125-056-10
2	CERAMIC SPINDLE	1	0125-061-10
3	CERAMIC THRUST WASHER	1	0130-028-UK
4	IMPELLER ASSY PP	1	0125-055-01
5	Viton 'O' RING	1	0125-065-UK
6	PUMP HOUSING P.P	1	0125-058-10
7	DRIVE MAGNET ASSY (5/16 bore)	1	5002-200-01
8	HOUSING SCREW ST/STEEL	6	0115-062-10
9	HOUSING WASHER ST/STEEL	6	0150-200-UK
10	MOTOR BRACKET	1	0125-069-10

Performance

Tests obtained with water 1.0 SG



50 Hz 2900 rpm 60 Hz 3400 rpm

