

# AC-5R-MD

Magnetically Driven

Multi-stage Centrifugal

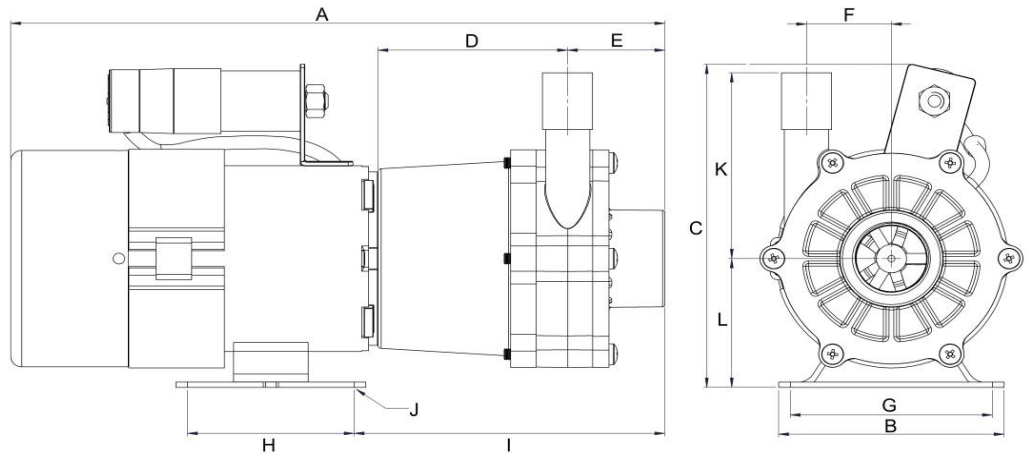
\* Not to scale.  
Specifications are subject to change.  
Dimensions may change depending on motor specified

### Wetted materials

Pump housing	Ryton
Impeller	Ryton
Spindle	Ceramic
Thrust Washer	Ceramic
O Ring	Nitrile
Impeller Mag	Stront Ferrite

### Limitations

Max. temp	93°C
Max. pressure	5 bar



### Dimensions

all dimensions in mm

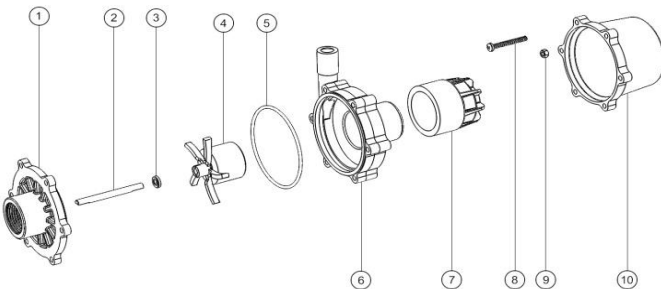
	A	B	C	D	E	F	G	H	I	J	K	L	Inlet	Outlet
50/60 Hz 230V	252.00	110.00	152.00	74.00	38.00	32.00	90.00	72.00	98.00	7 x10	86.00	56.00	1" BSP.F	1/2" NPT.M
50/60 Hz 230V	244.50	110.00	152.00	74.00	38.00	32.00	90.00	72.00	98.00	7 x10	86.00	56.00	1" BSP.F	1/2" NPT.M

### Motor Data

	Code	Frame	Mounting	IP	Phase	rpm	50 Hz Kw	50 Hz Amps	60 Hz rpm	60 Hz Kw	60 Hz Amps	Approvals	Total kg
50/60 Hz 230V	AF1J6215	56	B34	44	1	2900	0.07	0.7	3400	0.09	0.7	CE	3.25
50/60 Hz 230V	AFIH6457	56	B34	44	1	2900	0.07	0.75	3400	0.09	0.81	CE UL CSA*	3.25

\* Manufacturer's UL Number - E46412 and CSA Number - CSA154595

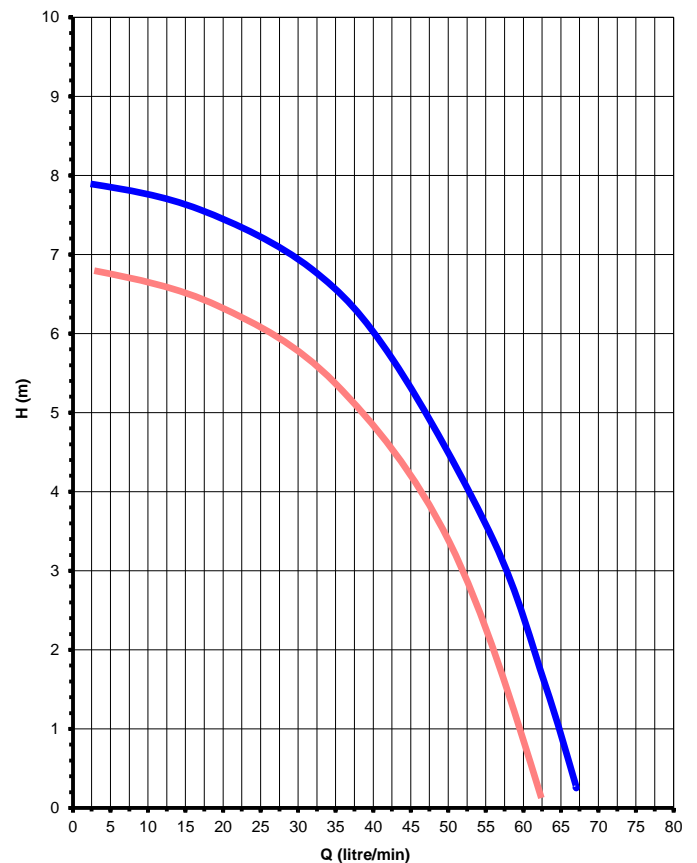
### Parts List



Item	Description	Qty	Code
1	FRONT COVER PPS	1	0150-167-10
2	CERAMIC SPINDLE	1	0130-024-UK
3	CERAMIC THRUST WASHER	1	0130-028-UK
4	IMPELLER ASSY PPS	1	0150-103-01
5	NITRILE 'O' RING	1	0135-007-UK
6	PUMP HOUSING PPS	1	0150-072-10
7	DRIVE MAGNET ASSY (5/16 bore)	1	0145-027-01
8	HOUSING SCREW ST/STEEL	6	0150-100-UK
9	HOUSING WASHER ST/STEEL	6	0150-200-UK
10	MOTOR BRACKET	1	0001-050-UK

### Performance

Tests obtained with water 1.0 SG



50 Hz 2900 rpm      60 Hz 3400 rpm



March May Ltd, Howard Road, Eaton Socon, St Neots, PE19 8NZ, UK

Tel: +44 (0) 1480 214444 Fax: +44 (0) 1480 405336 E-Mail: sales@marchmay.co.uk Website: www.marchmay.co.uk