

EMD-5 SP

Magnetically Driven

Single-stage Centrifugal

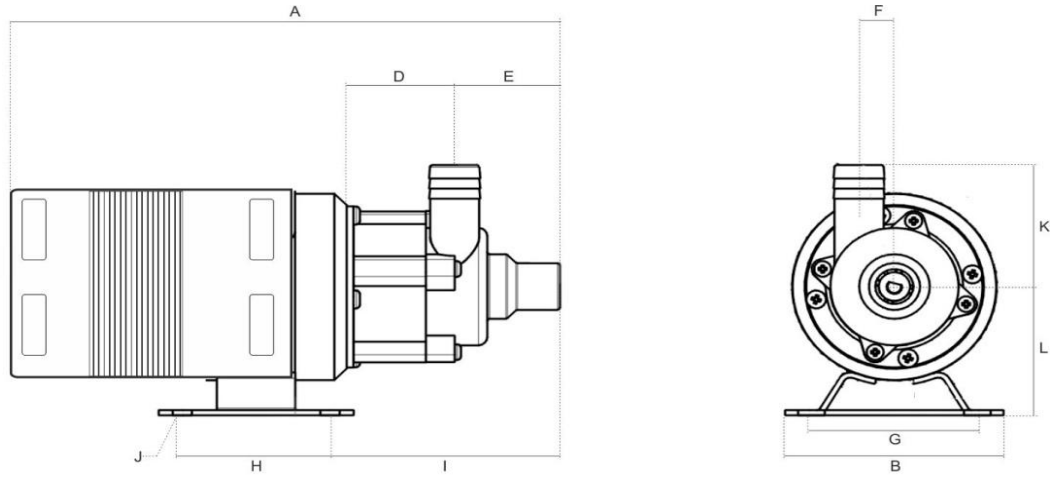
* Not to scale.
Specifications are subject to change.
Dimensions may change depending on motor specified

Wetted materials

Pump housing	Polypropylene
Impeller	Polypropylene
Spindle	Ceramic
Thrust Washer	Ceramic
O Ring	Viton/EPDM/ Nitrile

Limitations

Max. temp	88 °C
Max. pressure	3.4 bar



Dimensions

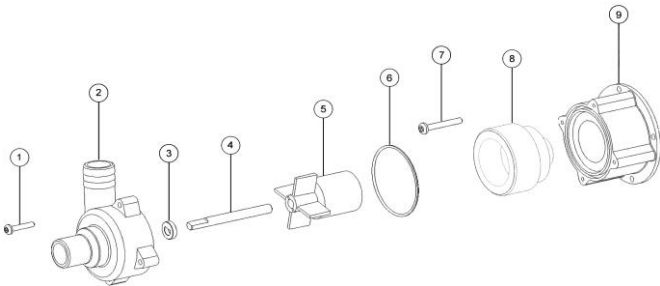
all dimensions in mm	A	B	C	D	E	F	G	H	I	J	K	L	Inlet	Outlet
50 Hz SP 230V	213.00	89.00	140.00	65.00	43.00	14.40	67.50	60.20	94.00	7.8x10.9	54.00	57.00	*	*

* The are two inlet and outlet options for this pump : 1/2" BSP or 3/4" barbed push fit.

Motor Data

	Code	Frame	Mounting	IP	Phase	rpm	50 Hz Kw	Amps	60 Hz rpm	Kw	Amps	Approvals	Total kg
50 Hz SP 230V	ABIP6898K	56	B34	0	1	2900	0.03	0.65	-	-	-	CE	1.5

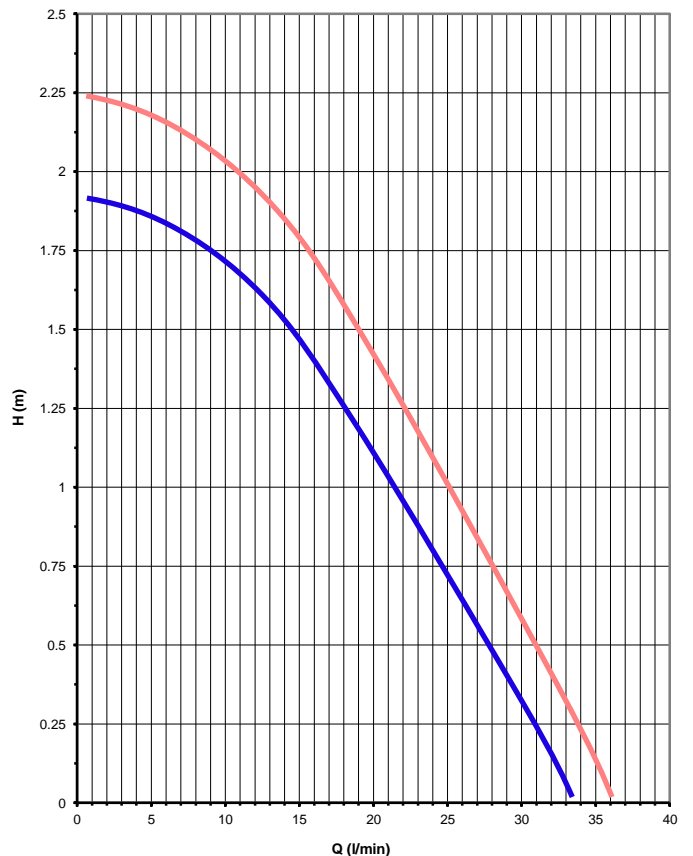
Parts List



Item	Description	Qty	Code
1	PUMP HOUSING SCREW No6 x 3/4"	4	5002-210-50
2	PUMP HOUSING PLAIN PP	1	5002-140-01
	PUMP HOUSING THREADED	1	5002-141-01
3	CERAMIC THRUST WASHER	1	0130-028-UK
4	CERAMIC SPINDLE	1	0130-024-UK
5	IMPELLER ASSEMBLY	1	5002-134-01
6	NITRILE 'O' RING	1	5002-120-30
7	MOTOR SCREW M4 x 30 SS	4	5022-221-50
8	DRIVE MAGNET ASSY FERRITE/PPS	1	5002-200-01
9	REAR HOUSING PP	1	5002-250-01

Performance

Tests obtained with water 1.0 SG



50 Hz 2900 rpm

