

AC-3P BLDC

Magnetically Driven

Multi-stage Centrifugal

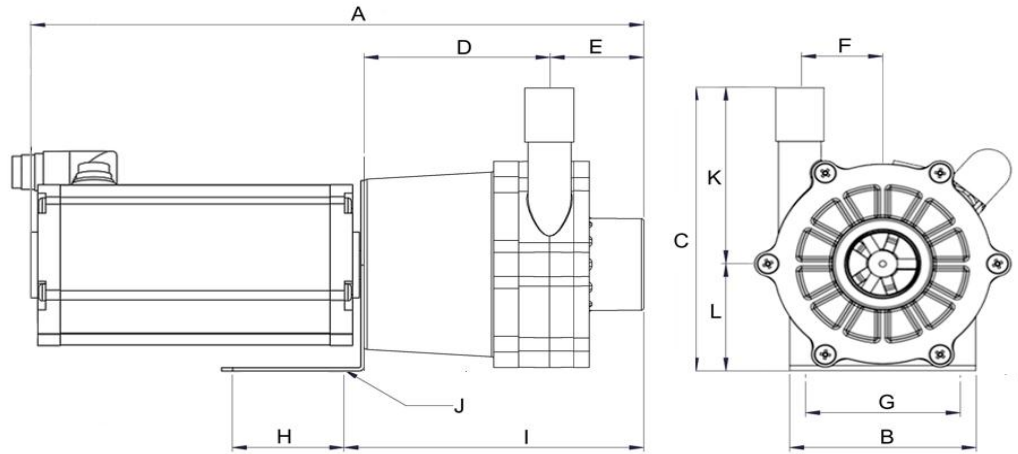
* Not to scale.
Specifications are subject to change.
Dimensions may change depending on motor specified

Wetted materials

Pump housing	Polypropylene
Impeller	Polypropylene
Spindle	Ceramic
Thrust Washer	Ceramic
O Ring	Nitrile

Limitations

Max. temp	88 °C
Max. pressure	3.0 bar



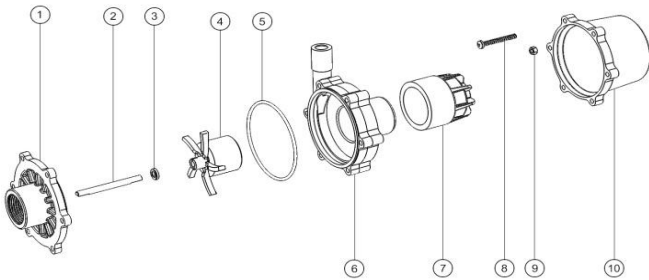
Dimensions

all dimensions in mm	A	B	C	D	E	F	G	H	I	J	K	L	Inlet	Outlet
12 / 24V DC BL	200.00	82.00	107.50	70.00	31.00	32.00	72.00	45.00	114.50	4 x Ø 7.00	70.00	37.50	3/4" FPT	1/2" MPT

Motor Data

	Code	Frame	Mounting	IP	Phase	rpm	50 Hz Kw	50 Hz Amps	60 Hz rpm	60 Hz Kw	60 Hz Amps	Approvals	Total kg
12V DC BL	GR 63x25	-	-	55	1	3100	0.05	5.2	-	-	-	CE / UL	3.5
24V DC BL	GR 63x25	-	-	55	1	3300	0.05	2.7	-	-	-	CE / UL	3.5

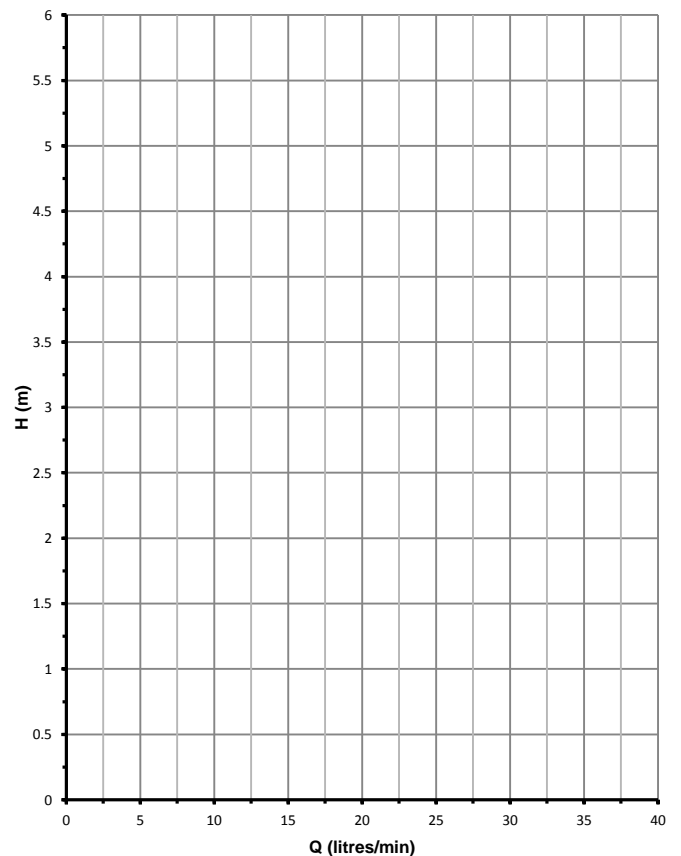
Parts List



Item	Description	Qty	Code
1	PUMP COVER POLYPROPYLENE	1	0130-021-10
2	CERAMIC SPINDLE	1	0130-024-UK
3	CERAMIC THRUST WASHER	1	0130-028-UK
4	IMPELLER ASSEMBLY	1	0130-069-02
5	NITRILE O RING	1	0135-007-UK
6	PUMP HOUSING POLYPROPYLENE	1	0130-018-10
7	DRIVE MAGNET	1	0750-254-00
8	BRACKET FIXING SCREW	4	0130-100-UK
9	BRACKET FIXING WASHERS	4	0135-200-UK

Performance

Tests obtained with water 1.0 SG



3100 rpm

