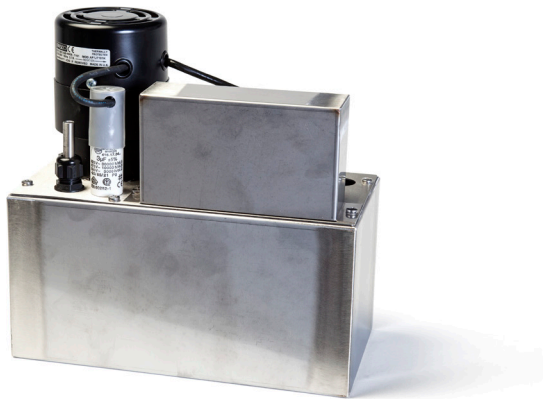


# HC-2A

## HOT CONDENSATE PUMP

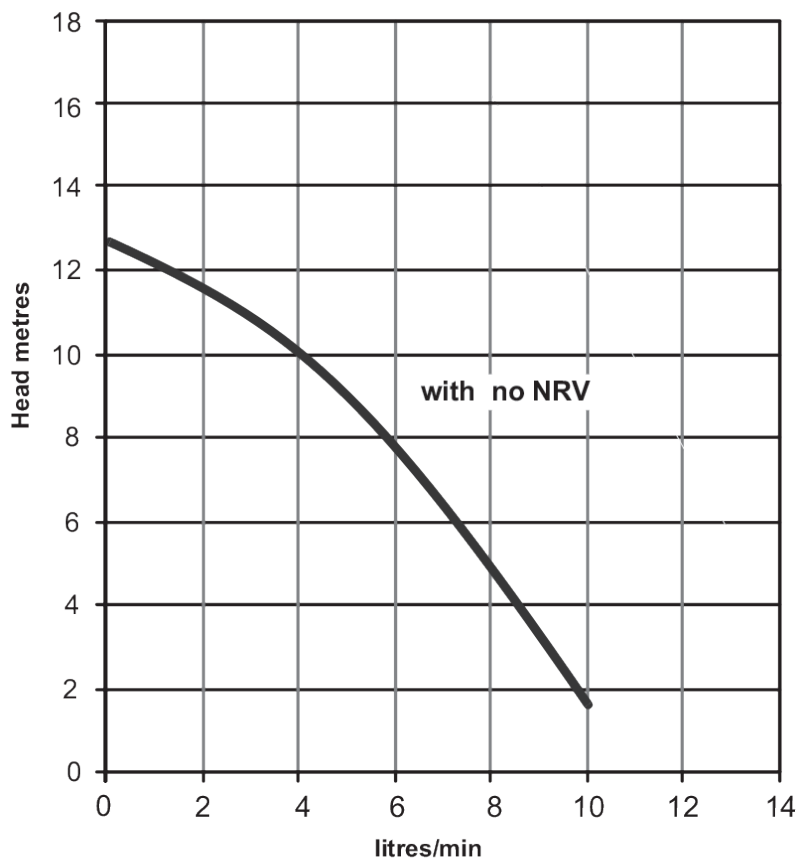


PLEASE NOTE THAT PUMP MAY DIFFER FROM PRODUCT SHOWN



- ☑ Hot Condensate Pump
- ☑ Up to 10l/min flow
- ☑ Up to 12.5m head
- ☑ 2 Stage Verticle Spindle Pump
- ☑ 3 Litre Tank Capacity
- ☑ Automatic pump activation on fluid level.
- ☑ High level alarm

### PERFORMANCE



Tests obtained with water 1.0 SG

— 50 hz 2900 rpm

### SPECIFICATION

#### FEATURES

Temp:	Max 100°C
Pressure:	6 Bar (System)
Inlet:	25mm OD Hole
Outlet:	10mm OD Plain

#### WETTED MATERIALS

Tank:	304 SS
Floats:	Ryton
Float Rod:	316 SS
Pump Housing:	Ryton
O-Ring:	Nitrile
Motor Shaft:	316 SS



March May Ltd, Howard Road, Eaton Socon, St. Neots, Cambridgeshire, PE19 8NZ, UK

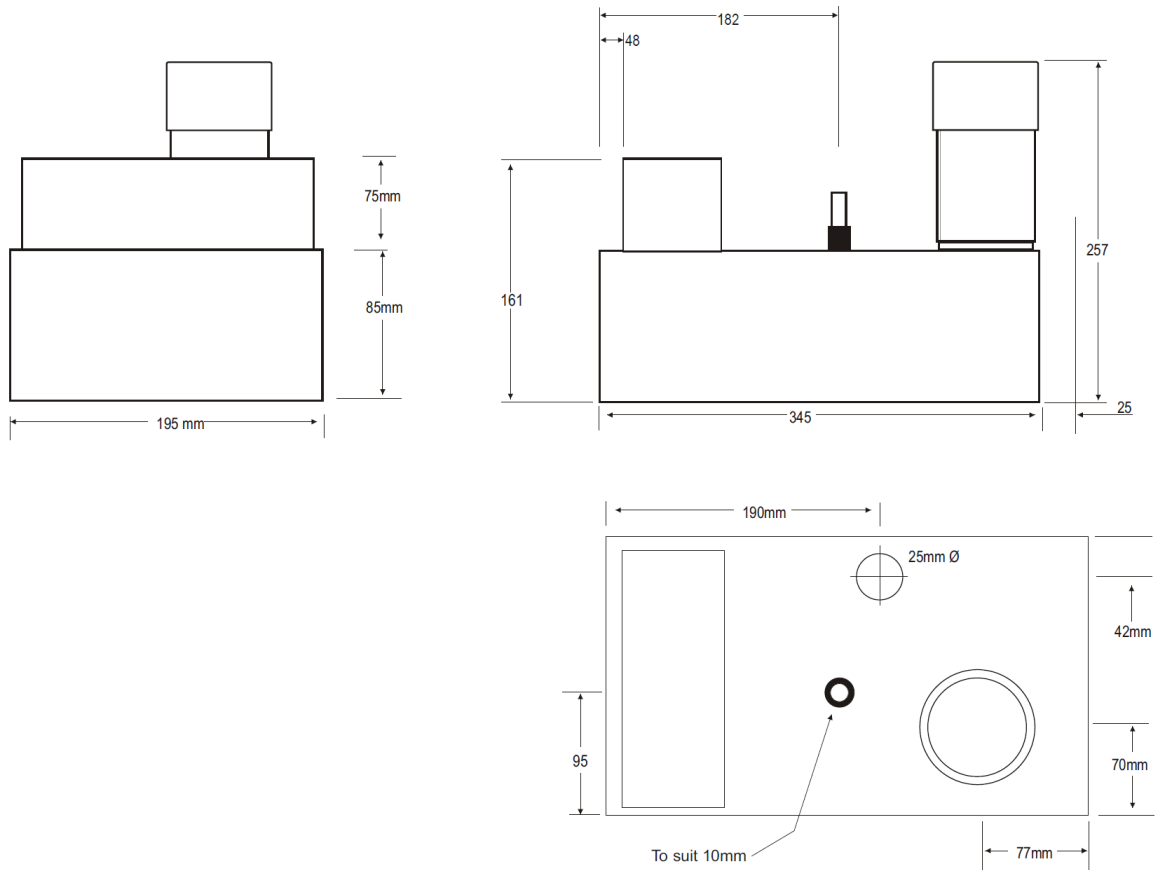
Tel: +44 (0) 1480 214444 Fax: +44 (0) 1480 405336 E-mail: sales@marchmay.co.uk Website: www.marchmay.co.uk

# HC-2A

HOT CONDENSATE PUMP

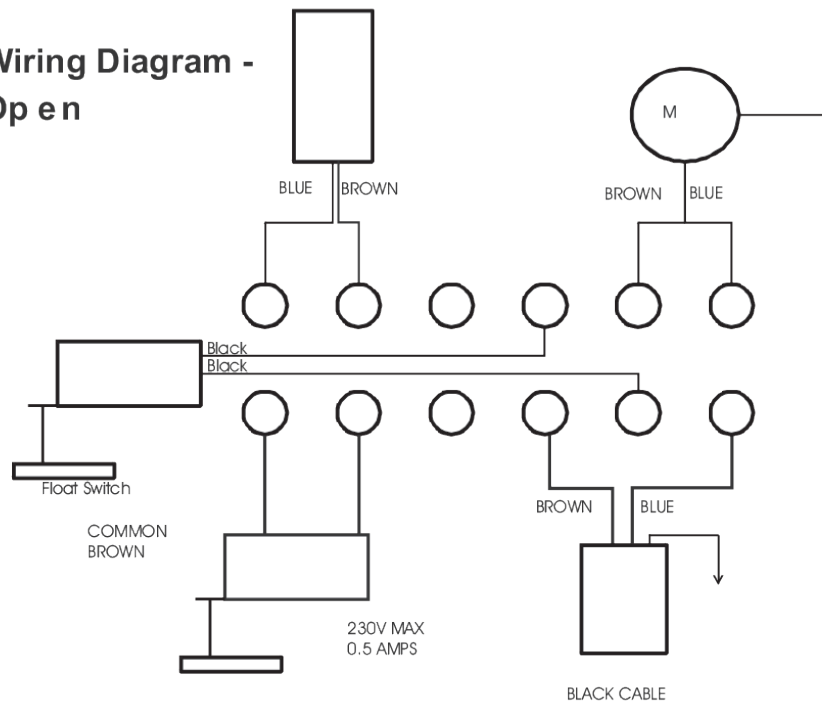


## DIMENSIONS



## WIRING

### Wiring Diagram - Open



March May Ltd, Howard Road, Eaton Socon, St. Neots, Cambridgeshire, PE19 8NZ, UK

Tel: +44 (0) 1480 214444 Fax: +44 (0) 1480 405336 E-mail: sales@marchmay.co.uk Website: www.marchmay.co.uk