

PH RANGE

MAGNETICALLY DRIVEN, MULTI-STAGE CENTRIFUGAL



- ✓ Industrial pump for use with chemicals
- ✓ Multi-stage magnetic drive pump
- ✓ Available with threaded, or Flange connections
- ✓ Used in a wide variety of applications

MODEL IDENTIFICATION

NH - 3024PH - CV - G
(1) (2) (3) (4) (5) (6) (7)

POS	DESCRIPTION	CODE
1	BORE	30 = DISCHARGE 25mm SUCTION 40mm 40 = DISCHARGE 40mm SUCTION 50mm 50 = DISCHARGE 50mm SUCTION 65mm
2	NO. OF STAGES	1 = 1 STAGE, 2 = 2 STAGE
3	MODEL NO.	12, 13, 24, 26
4	SERIES NAME	PH

POS	DESCRIPTION	CODE
5	BEARING	C = CARBON, SI = SILICON CARBIDE
6	O RING	V = VITON
7	CONNECTION	G = BSP THREAD, F = FLANGE

SPECIFICATION

MODEL	FLANGE SIZE		BEST EFFICIENCY POINT (M - L/MIN)		MOTOR OUTPUT (KW)
	OUTLET (MM)	INLET (MM)	SPECIFIC GRAVITY	50HZ	
NH-3012PH	25	40	1.0	20 - 100	1.5
NH-3013PH	25	40	1.0	30 - 100	2.2
NH-3024PH	25	40	1.0	40 - 100	3.7
NH-3026PH	25	40	1.0	60 - 100	3.7
NH-4012PH	40	50	1.0	20 - 220	2.2
NH-4013PH	40	50	1.0	30 - 220	3.7
NH-4024PH	40	50	1.0	40 - 220	5.5
NH-4026PH	40	50	1.0	60 - 220	7.5
NH-5012PH	50	65	1.0	20 - 450	3.7
NH-5013PH	50	65	1.0	30 - 450	5.5
NH-5024PH	50	65	1.0	40 - 450	7.5



March May Ltd, Howard Road, Eaton Socon, St. Neots, Cambridgeshire, PE19 8NZ, UK

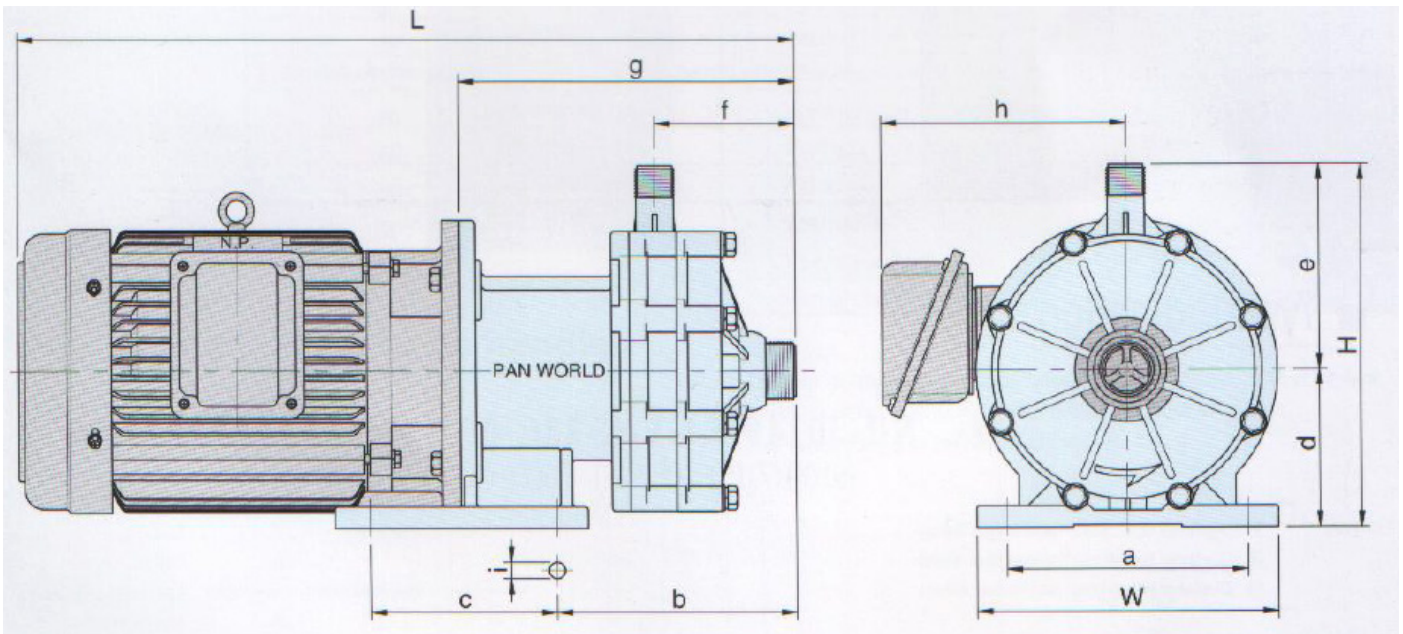
Tel: +44 (0) 1480 214444 Fax: +44 (0) 1480 405336 E-mail: sales@marchmay.co.uk Website: www.marchmay.co.uk

PH RANGE



MAGNETICALLY DRIVEN, SINGLE-STAGE CENTRIFUGAL

DIMENSIONS



MODEL	W	H	L*	a	b	c	d	e	f	g	h*	i
NH-3012PH	250	295	516	200	165	165	125	170	82	233	170	12
NH-3013PH	250	295	516	200	165	165	125	170	82	233	170	12
NH-3024PH	250	300	643	200	198	165	130	170	115	277	203	12
NH-3026PH	250	300	643	200	198	165	130	170	115	277	203	12
NH-4012PH	250	300	648	200	180	165	130	170	85	282	203	12
NH-4013PH	250	300	648	200	180	165	130	170	85	282	203	12
NH-4024PH	250	350	686	220	222	195	180	170	127	346	252	14
NH-4026PH	280	350	720	220	222	195	180	170	127	346	252	14
NH-5012PH	280	350	644	220	180	195	180	170	85	304	252	14
NH-5013PH	280	350	678	220	180	195	180	170	85	304	252	14
NH-5024PH	280	350	880	220	222	195	180	170	127	376	288	14

NOTE: * DIMENSIONS MAY DIFFER DEPENDENT ON MOTOR SELECTION. ASK MARCH MAY FOR DETAILS



March May Ltd, Howard Road, Eaton Socon, St. Neots, Cambridgeshire, PE19 8NZ, UK

Tel: +44 (0) 1480 214444 Fax: +44 (0) 1480 405336 E-mail: sales@marchmay.co.uk Website: www.marchmay.co.uk

PH RANGE

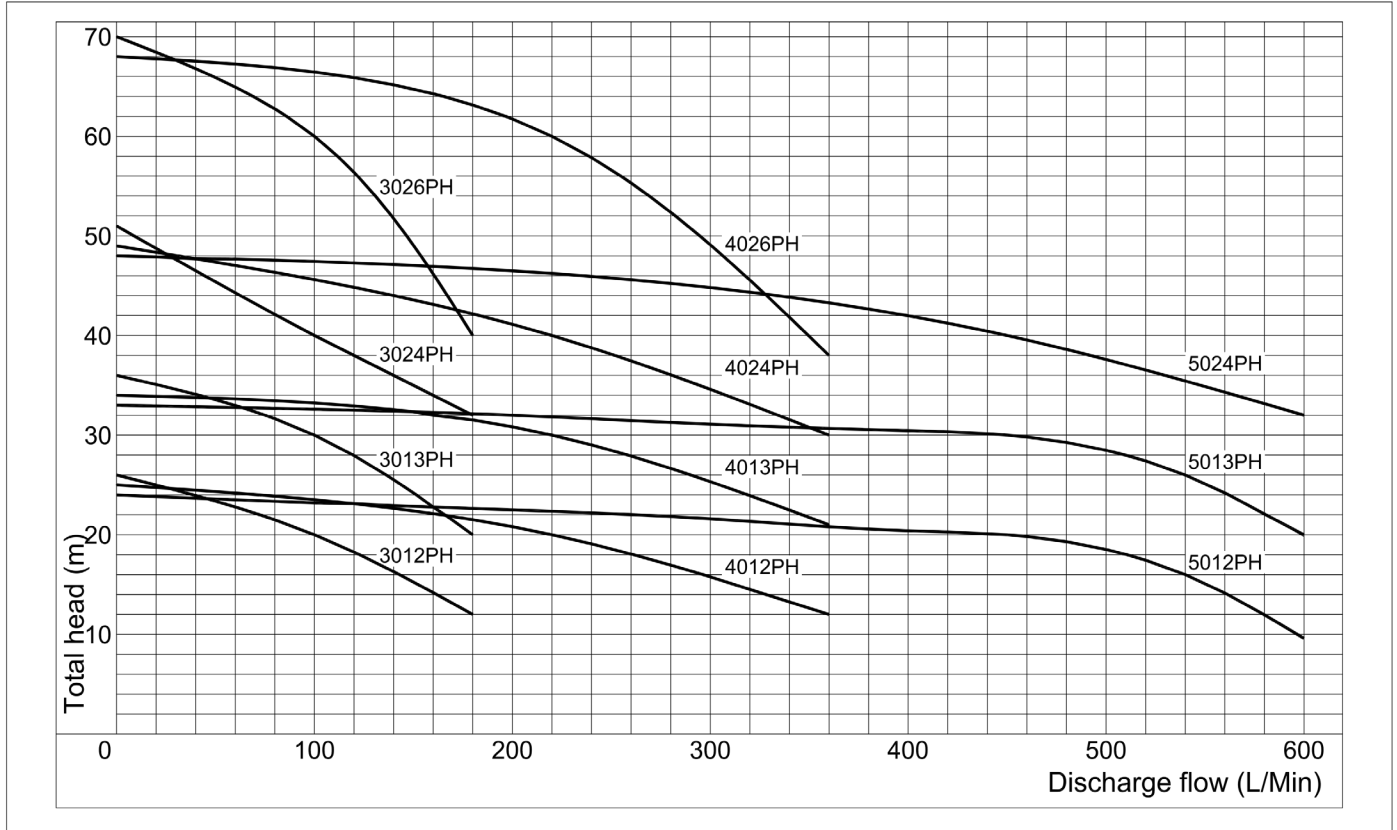


MAGNETICALLY DRIVEN, SINGLE-STAGE CENTRIFUGAL

PERFORMANCE

PH Family Curve 50Hz

Nominal speed : 2,860 r.p.m



NOTE: 50HZ, BASED ON WATER. IMPELLERS TRIMMED TO SG1.0. PLEASE ASK FOR ADAPTED CURVES FOR OTHER SG VALUES AND CONTACT MARCH MAY FOR 60HZ PERFORMANCE



March May Ltd, Howard Road, Eaton Socon, St. Neots, Cambridgeshire, PE19 8NZ, UK

Tel: +44 (0) 1480 214444 Fax: +44 (0) 1480 405336 E-mail: sales@marchmay.co.uk Website: www.marchmay.co.uk