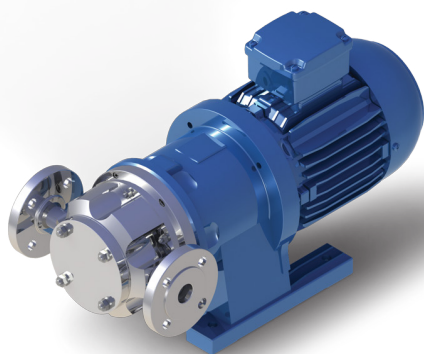
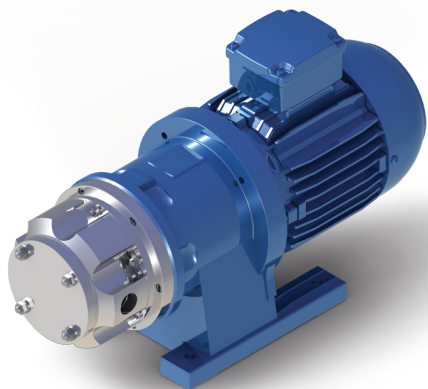


SVM SERIES

MAGNETICALLY DRIVEN, ROTARY VANE PUMP



The SVM series are a range of Rotary Vane Seal-less Mag-drive pumps that are ideally suited for low flow / high head applications. SVM pumps feature self-compensating sliding-vanes which maintain design head and flow capacities for extended operating life. SVM vane pumps are suitable for thin non-lubricating liquids and/or high differential pressure without rapid wear associated with gear mechanisms.

- ☑ Positive Displacement Pump
- ☑ Capable of self-priming from a dry start
- ☑ No gears to wear or metal to metal contact
- ☑ Suitable for use with variable speed drives
- ☑ Heavy duty construction for increased durability and safety
- ☑ Replaceable carbon cartridge - low maintenance costs
- ☑ Chemically resistant carbon or silicon carbide sleeve bearings
- ☑ High torque magnets, suitable for direct starting motors
- ☑ Manufactured in accordance with the current CE-standard
- ☑ Explosion proof models according to Atex Directive category II are also available

SPECIFICATION

FEATURES

- ☑ Positive Displacement rotary vane pumps
- ☑ Performance and Dimensions: standard PN16
- ☑ Models: 1x100 up to 2x2000
- ☑ BSP threaded, Flange option
- ☑ Dry Self Priming
- ☑ High Viscosities

MATERIALS

- ☑ Stainless Steel AISI 316L, Fully machined
- ☑ Incoloy 825 and Hastelloy C, available on request

TYPICAL APPLICATIONS

- ☑ Chemical and pharmaceutical plants
- ☑ Pilot plants & laboratories
- ☑ Injection and sampling systems
- ☑ Refrigerants and ammonia recirculation
- ☑ Mechanical seal flushing

PERFORMANCE

Discharge Nozzles	3/8" UP TO 1"
Poles	4 OR 6
Capacity (m ³ /h)	UP TO 2.2
Pressure (bar)	UP TO 14
Temperature (°C)	300



March May Ltd, Howard Road, Eaton Socon, St. Neots, Cambridgeshire, PE19 8NZ, UK

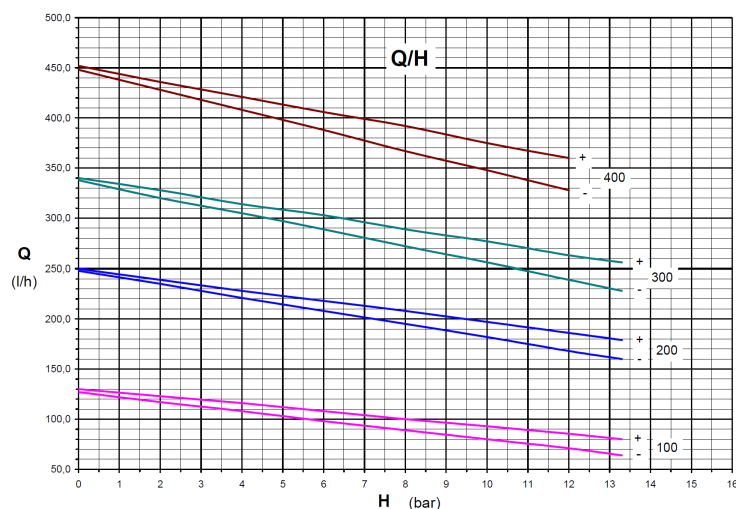
Tel: +44 (0) 1480 214444 Fax: +44 (0) 1480 405336 E-mail: sales@marchmay.co.uk Website: www.marchmay.co.uk

SVM SERIES

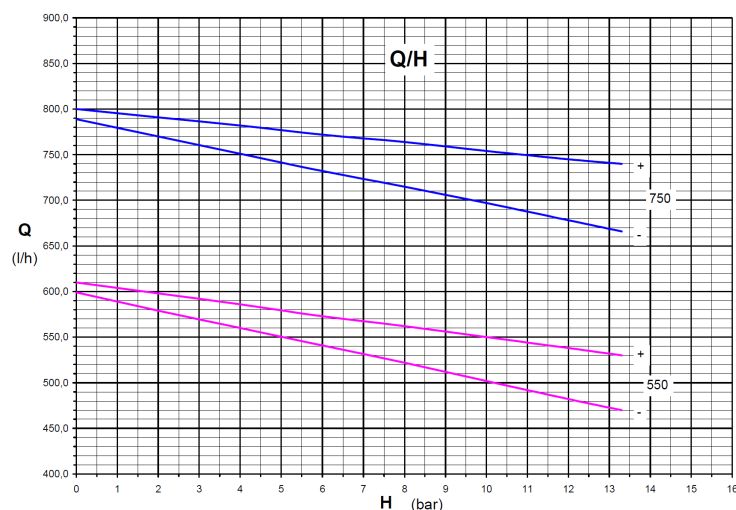
MAGNETICALLY DRIVEN, ROTARY VANE PUMP



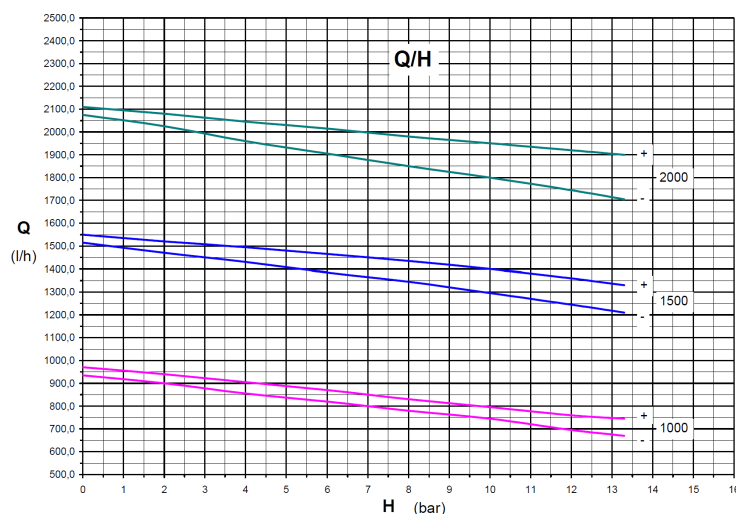
PERFORMANCE 1X SERIES



PERFORMANCE 1.5X SERIES



PERFORMANCE 2X SERIES



March May Ltd, Howard Road, Eaton Socon, St. Neots, Cambridgeshire, PE19 8NZ, UK

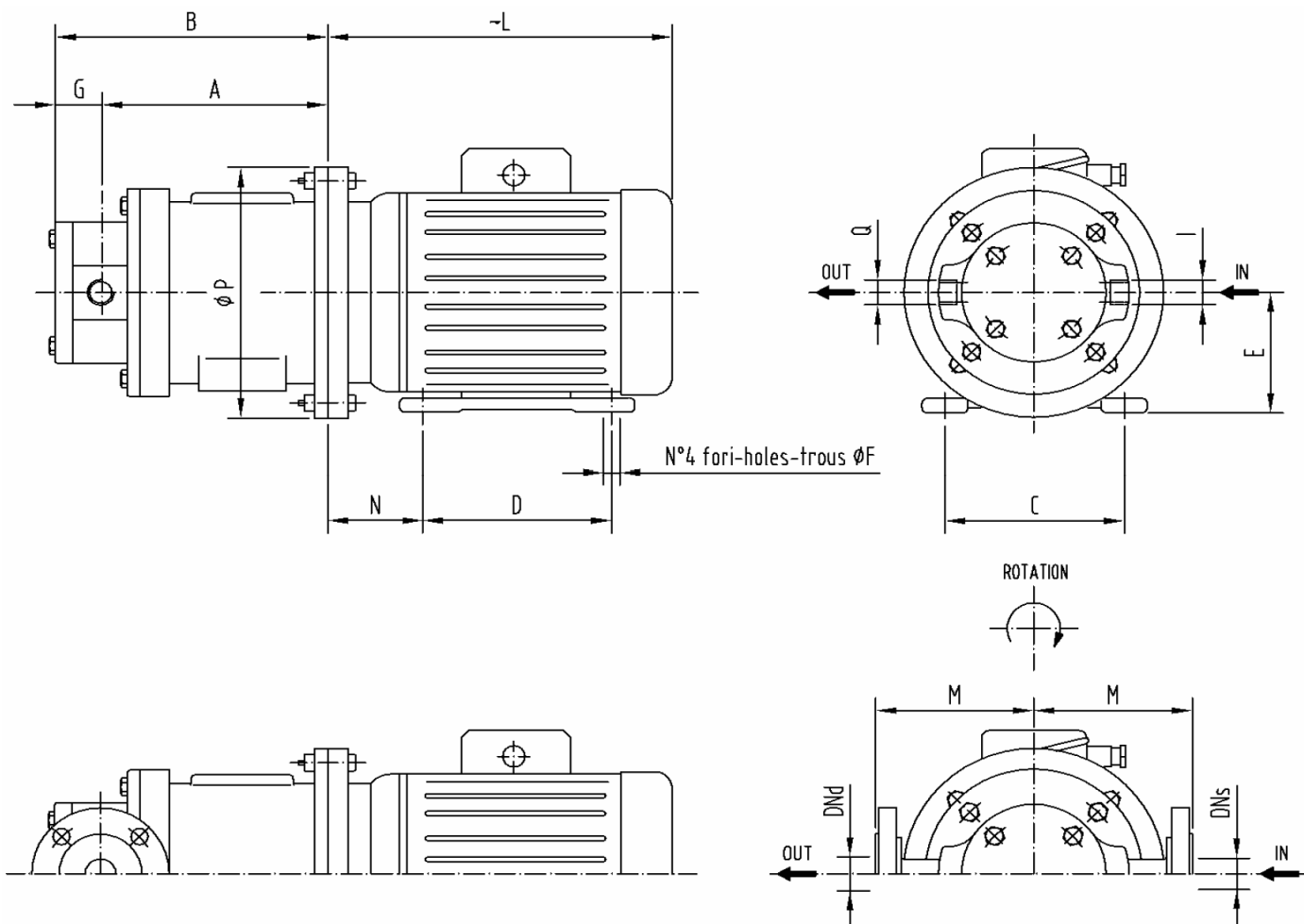
Tel: +44 (0) 1480 214444 Fax: +44 (0) 1480 405336 E-mail: sales@marchmay.co.uk Website: www.marchmay.co.uk

SVM SERIES

MAGNETICALLY DRIVEN, ROTARY VANE PUMP

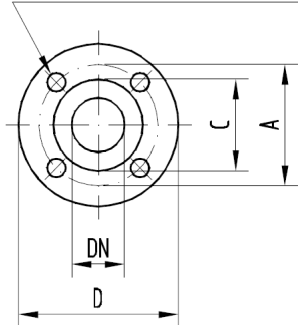


DIMENSIONS 1X & 1.5X SERIES



MODEL	DN _s / I		DN _d / Q		A	B	C	D	E	F	G	L	M	N	P
	mm	GAS	mm	GAS											
SVM 1x...	15	3/8"	15	3/8"	127	153	112	90	71	7	26	210	91	45	160
SVM 1.5x...	20	1/2"	20	1/2"	168	204	125	100	80	9	36	230	97	50	200

N° F fori-holes-trous ØG



DN	UNI PN 16				
	D	C	A	F	G
15	95	45	65	4	14
20	105	58	75	4	14

Ø	ANSI 150 RF				
	D	C	A	F	G
1/2"	88.9	34.9	60.3	4	15.9
3/4"	98.4	42.9	69.8	4	15.9



March May Ltd, Howard Road, Eaton Socon, St. Neots, Cambridgeshire, PE19 8NZ, UK

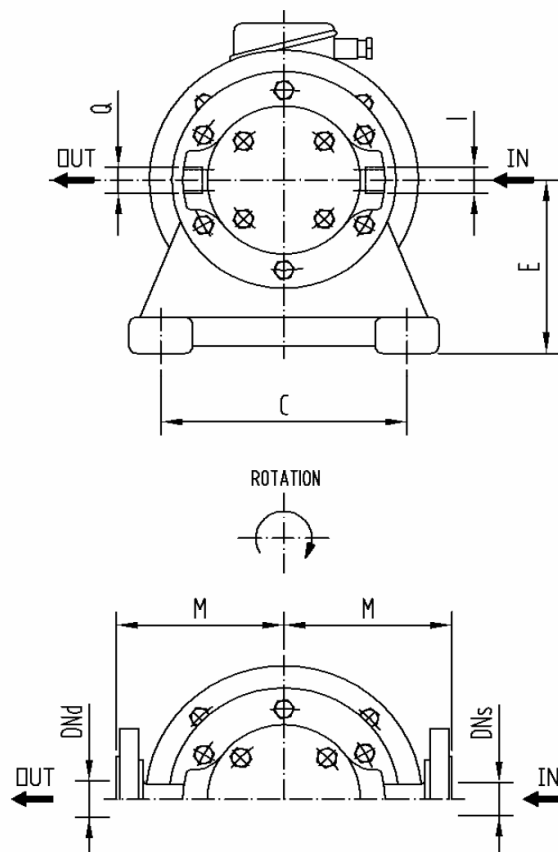
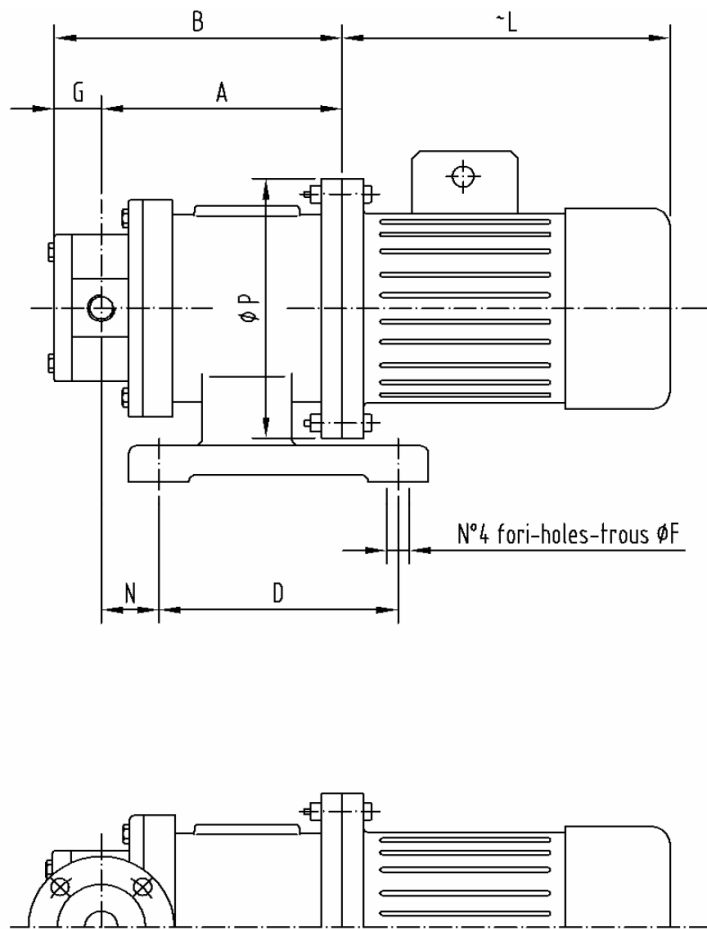
Tel: +44 (0) 1480 214444 Fax: +44 (0) 1480 405336 E-mail: sales@marchmay.co.uk Website: www.marchmay.co.uk

SVM SERIES

MAGNETICALLY DRIVEN, ROTARY VANE PUMP

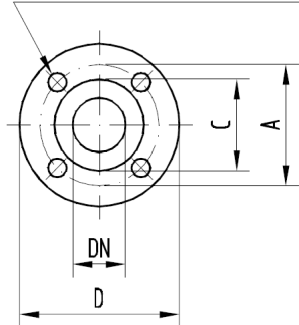


DIMENSIONS 2X SERIES



MODEL	DNs / I		DNd / Q		A	B	C	D	E	F	G	L	M	N	P
	mm	GAS	mm	GAS											
SVM 2x...	25	3/4"	25	3/4"	209	256	155	193	136	12	47	270	123	90	200

N° F fori-holes-trous ϕG



DN	UNI PN 16				
	D	C	A	F	G
25	115	68	85	4	14

Ø	ANSI 150 RF				
	D	C	A	F	G
1"	107.9	50.8	79.4	4	15.9



March May Ltd, Howard Road, Eaton Socon, St. Neots, Cambridgeshire, PE19 8NZ, UK

Tel: +44 (0) 1480 214444 Fax: +44 (0) 1480 405336 E-mail: sales@marchmay.co.uk Website: www.marchmay.co.uk